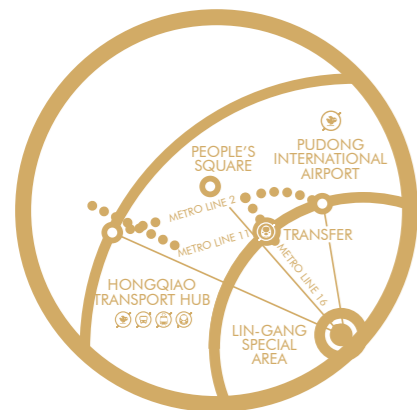
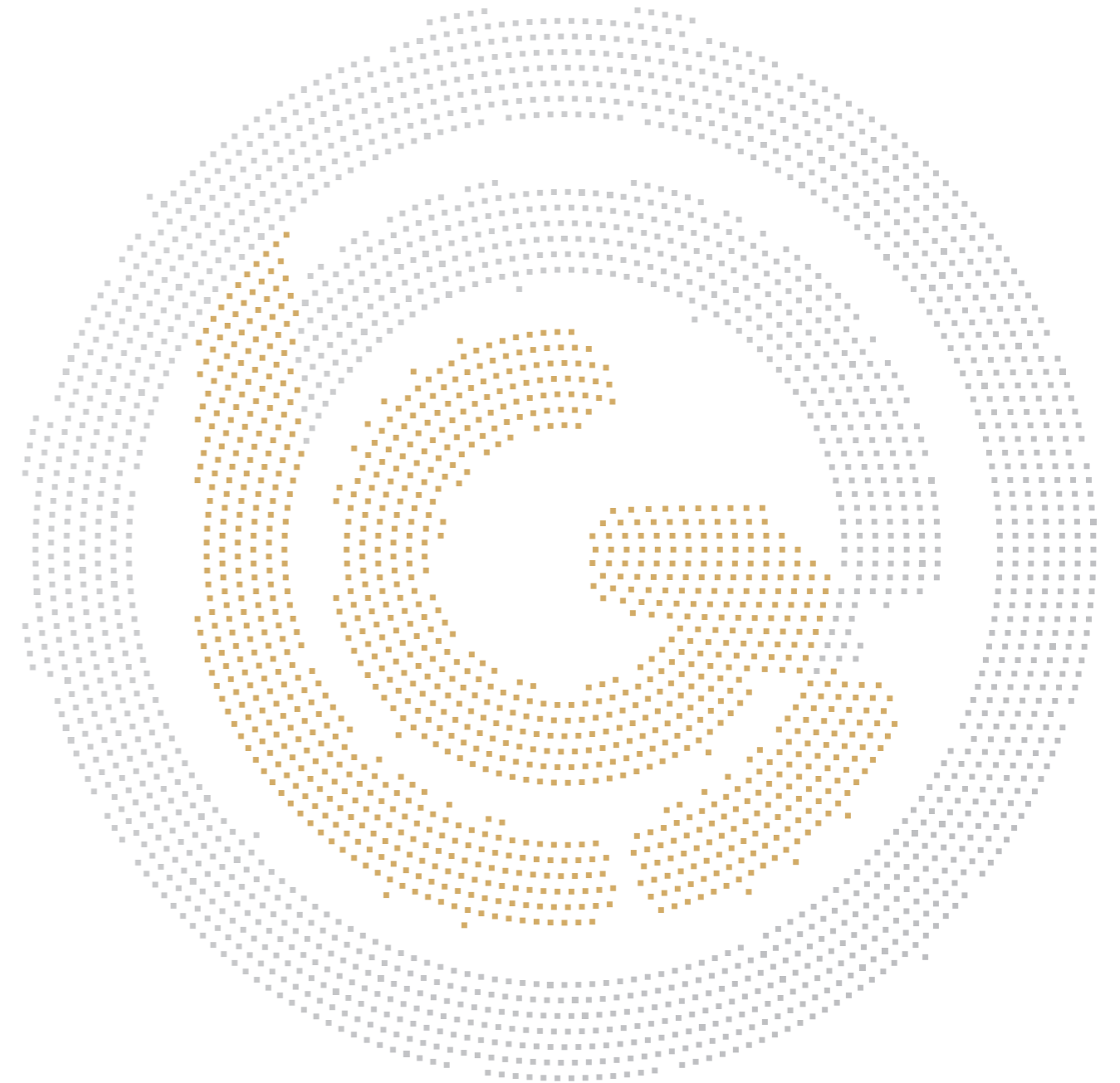


CHINA (SHANGHAI) PILOT FREE TRADE ZONE

# LIN-GANG SPECIAL AREA INVESTMENT GUIDE

INVESTMENT GUIDE OF LIN-GANG SPECIAL AREA, CHINA (SHANGHAI) PILOT FREE TRADE ZONE (ENGLISH)



OFFICIAL WEBSITE  
QR CODE



OFFICIAL WECHAT  
QR CODE



SHANGHAI  
LIN-GANG APP

LIN-GANG SPECIAL AREA ADMINISTRATION, CHINA (SHANGHAI) PILOT FREE TRADE ZONE

EDITED BY INVESTMENT PROMOTION AND SERVICE CENTER OF LIN-GANG SPECIAL AREA  
OF CHINA (SHANGHAI) PILOT FREE TRADE ZONE



NEW FUTURE IN SPECIAL AREA



	SIEMENS	世邦机器		PENGPU	华仪		东和恩泰
		徐工集团		上海电气	科大讯飞	PHILIPS	
	华大半导体		VOLVO PENTA	商汤			Cambricon 寒武纪科技
	天合光能		WÄRTSILÄ	HHM	海德曼		SINSUN 新松
		amazon	DAMCO	DSV	Endress+Hauser People for Process Automation	FOREVER 21	STAPLES
		安吉物流 Anji Logistics		BOSCH	菜鸟		EAST TOP
东泽国际	PANALPINA on 6 continents		EOJA			HAIBO SUPPLY CHAIN	
HONGYING SCM We Make Your Supply Chain	基森 GIESSEN	KERRY LOGISTICS	江铜集团				CHRYSLER
	Pacorini Metals ITALY MANUFACTURED LOGISTICS	LDC Lion Digital Company		MAHLE	JINCHUANMAIKE 金川迈科		
SLC 特取股份	Mentor SPECIALTY OF ELECTRONIC DESIGN	MERCURIA	浦发银行 SPDBANK	Global Logistic Properties 普洛斯			
上实验租赁 Shanghai Experimental Leasing Company	中国神华 CHINA SHENHUA	Sterigenics A Sanyo Health Company	Stanley Black & Decker	C.Steinweg Group	HOLA 特力和乐家居		天猫TMALL.COM
同华集团 TONGHUA GROUP	同盛物流 TONGSHENG LOGISTICS	TOLL				伊禾农产品	怡亚通 Eternal Asia
						optiver	
mapletree			虎岛 LTC TSGER	JD 京东.COM 多·快·好·省	CATERPILLAR	LISHANG GROUP 利尚集团	上汽集团 SAIC MOTOR
中国外运 SINOTRANS		Imperial logistics	云从科技 CLOUDWALK				



# CONTENTS



PAGE 04  
**01**  
Five Important Elements

PAGE 05  
**02**  
Construction Goals

PAGE 06  
**03**  
Development Goals

PAGE 07  
**04**  
Planned Area

PAGE 08-10  
**05**  
Location & Transport

PAGE 11  
**06**  
Institutional System

PAGE 12-59  
**07**  
Industrial Layout

PAGE 60-85  
**08**  
Comprehensive Business Environment

# 5 IMPORTANT ELEMENTS

During his visit to Shanghai in November 2019, President Xi Jinping expressed new requirements to Lin-gang Special Area of China (Shanghai) Pilot Free Trade Zone, which can be summed up as “Five Important Elements”. His remarks pointed out the strategic positioning, development goals, pathways for achieving the goals, and detailed measures for the development of Lin-gang Special Area in the next stage, asked Lin-gang to achieve comprehensive and high-quality opening-up **on deeper levels, in broader areas, and with stronger determination**, and underlined the necessity for innovation of mechanisms and systems, improvement of institutions, and higher economic quality.

## An important base

for innovation and collaboration with global talents

## An important hub

to coordinate onshore and offshore business

## An important springboard

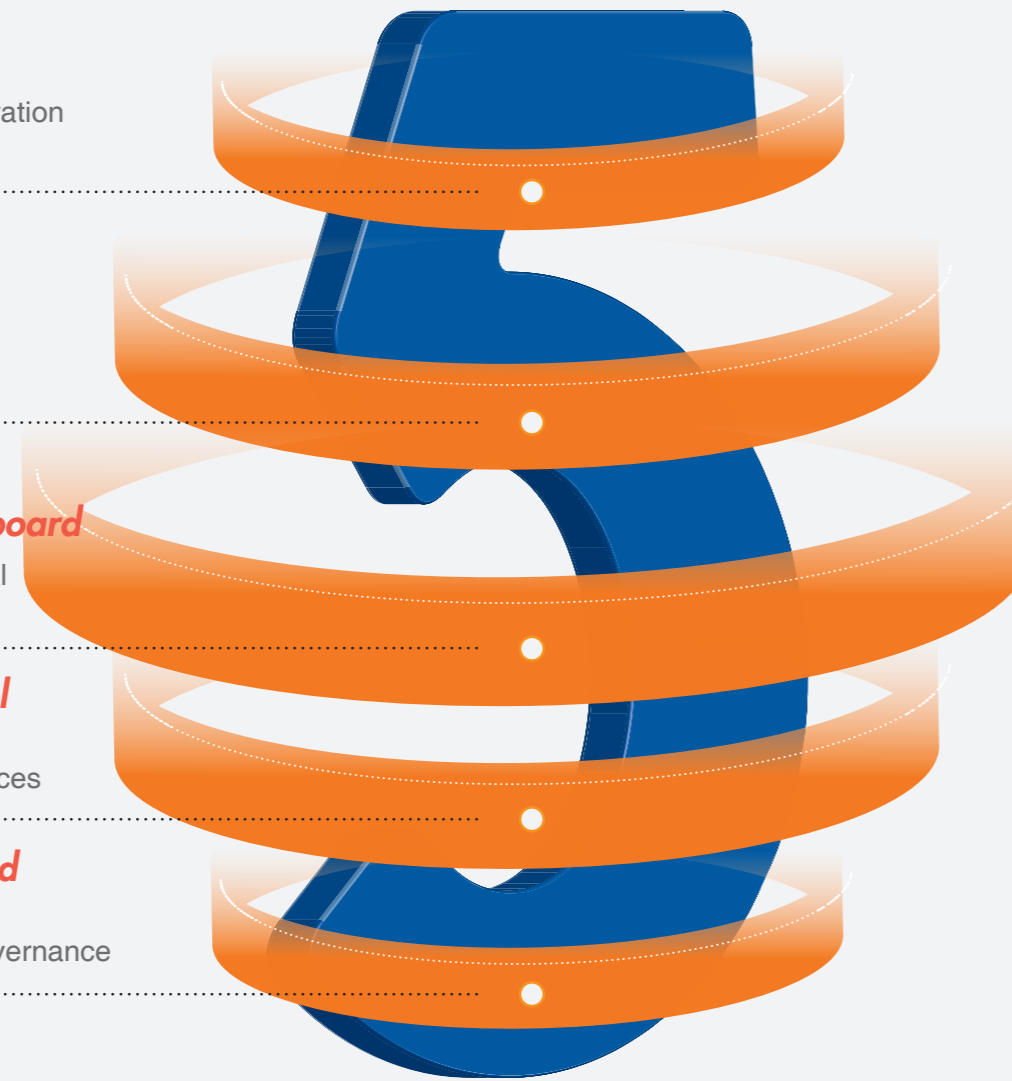
for companies going global

## An important channel

to connect domestic and global markets and resources

## An important test field

for the participation of international economic governance



# CONSTRUCTION GOALS

The construction of Lin-gang Special Area is an overarching decision made by the Party Central Committee of the Communist Party of China, with President Xi at its very heart. It is a major strategic move based on rigorous decision-making processes to further expand the opening of China, and a key measure to underpin the all-round opening of China and its willingness to lead the healthy development of globalization in the new era. Lin-gang benchmarks itself against the most competitive free trade

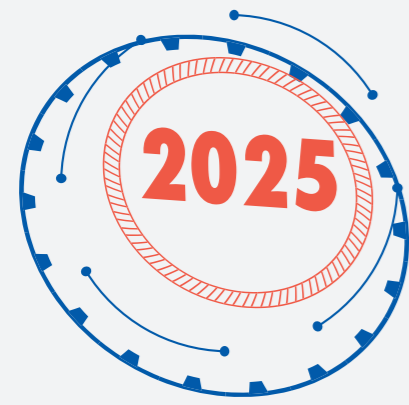
zones in the world, targets key areas that are in line with national strategies, with huge international market potentials, and not yet practical in other areas for their requirement of open markets, applies open policies and administrative measures that are competitive in international markets, embraces stress tests of open economy, actively serves and integrates into major national strategies, and provides better services to the overall strategic layout of opening-up China.

**Economic goal:** a special economic functional zone with stronger influence and competitiveness in international markets.

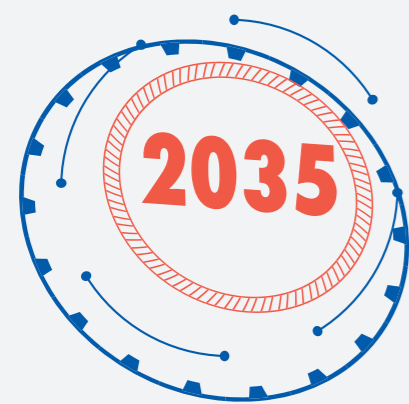
**Urban development goal:** a modern city with open innovation, smart ecosystem, vibrant industries, and livable and business-friendly environment.



## DEVELOPMENT GOALS



**2025 Goal:** Establish a well-developed institutional system, build a number of functional platforms, and achieve huge progress in economic strength and local economy.



**2035 Goal:** Become a special economic functional area with more mature and stable institutional innovation, build core functions to allocate worldwide high-end resources, and serve as an important platform for China to integrate into economic globalization.

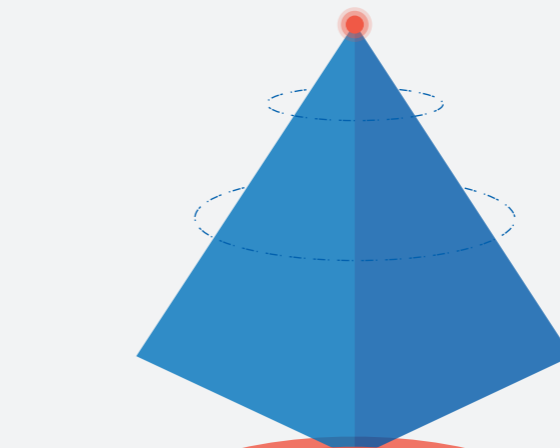
## PLANNED AREA

Lin-gang Special Area locates at the southeast corner of Shanghai, with Pudong International Airport, the third largest airport in the world, at its north, and Yangshan Deep Water Port, the largest container port in the world, at its south.

As an independent node city of the Yangtze River Delta, it sits at the northern end of Hangzhou Bay, a major passage over the sea, and the middle section of coastal corridor of east China.

The total planned area of Lin-gang Special Area is 873 km<sup>2</sup>, including the region south to Dazhi River and east to Jinhui Stream, Xiaoyangshan Island, and the southern part to Pudong International Airport. Under the principle of "overall planning and step-by-step implementation", the first stage of development (119.5 km<sup>2</sup>) is carried out in Nanhui New Town, Xiaoyangshan Island, the southern part to Pudong International Airport, and Lin-gang Equipment Industrial Zone.

The third largest airport in the world  
**Pudong International Airport**



A major passage over the sea  
**Hangzhou Bay**

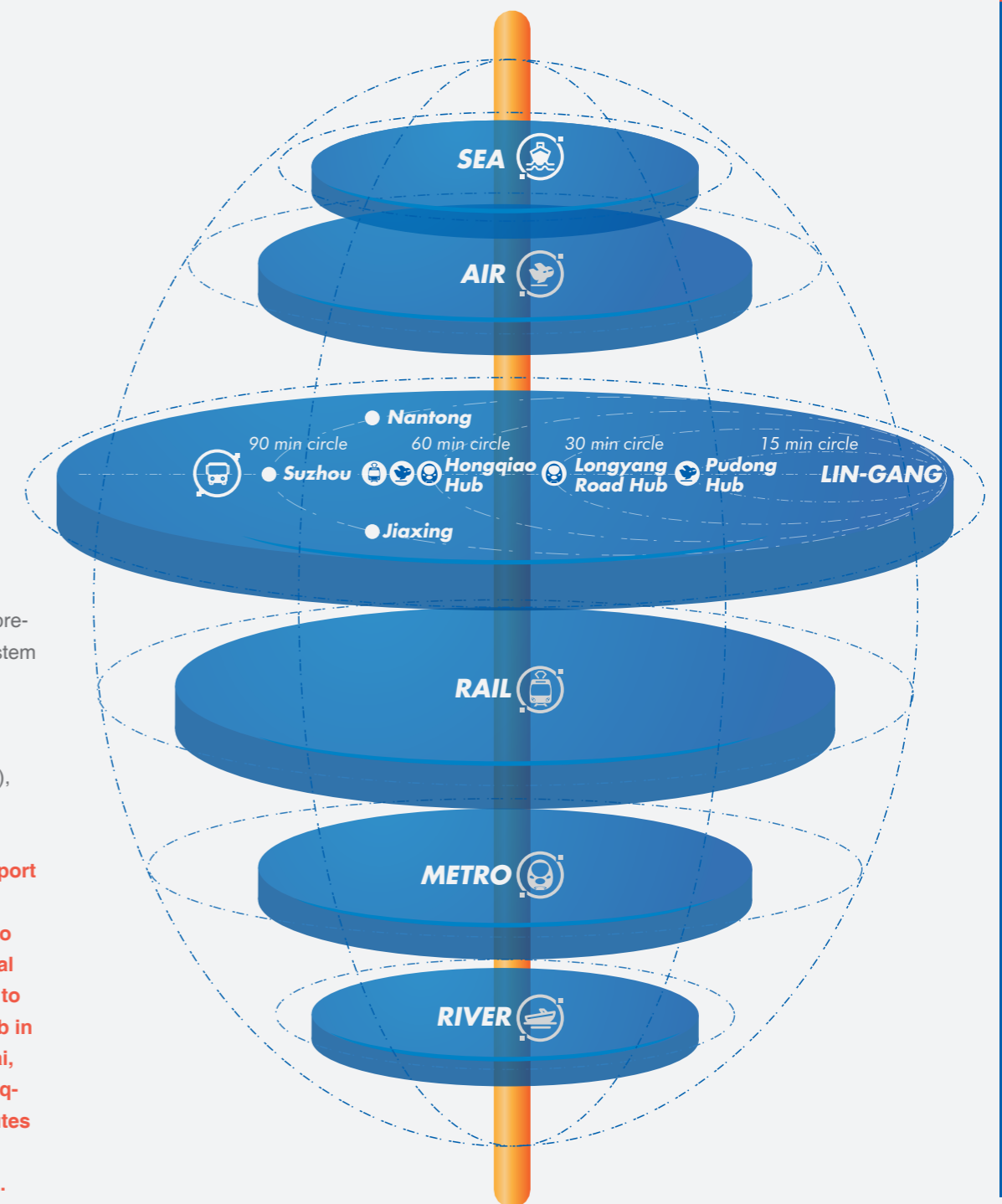
The largest port in the world  
**Yangshan International Hub Port**





Lin-gang Special Area sits at the intersection of Yangtze River estuary and Hangzhou Bay, connecting Pudong International Airport, the third largest airport in the world, in the north and Yangshan Deepwater Port, the largest container port in the world, in the south. It also boasts the only multi-purpose port in southeast Shanghai -- Shanghai South Port. It is a critical link along the coast combining sea, land, air, rail, underground and river transport, and an international frontier city that faces the world, connects Asia-Pacific and serves Yangtze River Delta.

## LOCATION & TRANSPORT



### By 2035

Build a modern, multimodal and comprehensive transport system in four dimensions, namely on global, national, regional (Yangtze River Delta), municipal and local levels. **Achieve the "15-30-60-90" transport service goal, which means 15 minutes to Pudong International Airport, 30 minutes to Longyang Road Hub in downtown Shanghai, 60 minutes to Hongqiao Airport, 90 minutes to nearby cities in Yangtze River Delta.**



### Sea Transport

With Yangshan Deep Water Port and Shanghai South Port in its vicinity, Lin-gang Special Area is only 35 km to Yangshan.



### Air Transport

With Pudong International Air Transport Hub at its north, it takes only 15 minutes to get to Pudong Airport and 60 minutes to Hongqiao Airport from downtown Lin-gang.



### Road Transport

The total road network stretches 1,500 km, among which 71 km are expressway. A 150-km rapid road network and a 400-km arterial highway network are planned. It takes less than 30 minutes on average to go to any place in downtown Lin-gang.



### Metro Transport

It takes 37 minutes from Longyang Road Station (Metro Line 16) to Lin-gang Special Area. A 100-km transport framework is planned, which takes only 30 minutes to downtown Shanghai.



### Rail Transport

Pudong Railway is now used for freight transportation, but it will be upgraded to an intercity railway connecting directly to Shanghai South Railway Station. It is integrated into the Yangtze River Delta and reaches nearby cities in the delta in 90 minutes.



### River Transport

Dalu Line (level 3 passage) Jinhui Port (level 4 passage)

### By 2022

Lin-gang Special Area issued "Three-Year Action Plan for the Improvement of Transport in Lin-gang Special Area of China (Shanghai) Pilot Free Trade Zone (2020-2022)" on 18 April 2020, which aims to further ameliorate Lin-gang's connectivity to other areas as well as its internal transport network.

### Local level

Build multi-level and green transport corridor. Improve the smooth transit among areas in Lin-gang to offer more choices on transport routes.

### Municipal level

Improve the capacity and quality of transport corridors. Form an intensive rapid road system connecting the center of Lin-gang to key areas and transport hubs in Shanghai.

### Internal level

Provide easy, smart and intensive service. Ensure the connectivity among the functional areas in downtown Lin-gang. Embody the features of transport in Lin-gang Special Area.

# INSTITUTIONAL SYSTEM

In addition to the open and innovative measures adopted in existing pilot free trade zones in China, Lin-gang Special Area will make even larger strides in promoting investment and trade facilitation by encouraging the free flow of investment, trade, capital, goods, and personnel.

### ADMINISTRATIVE SYSTEM:

Lin-gang Special Area Administration was established on 20 August 2019. As an institution under Shanghai Municipal People's Government, it oversees the implementation of all pilot reform tasks, economic management, and coordination and management of related administrative affairs in Lin-gang Special Area.

### ADMINISTRATIVE MEASURES:

Lin-gang Special Area is not a mere expansion of the free trade zone, nor is it a simple duplication of existing policies. It is an all-round, deep-rooted, and fundamental institutional innovation and reform.

2	5	1	2	2
<b>Principles</b>	<b>Freedom</b>	<b>Facilitation</b>	<b>Systems</b>	<b>Privileges</b>
<p><b>"THE BEST POSSIBLE POLICIES":</b></p> <p>Measures published by Shanghai are directly applied in Lin-gang Special Area if they are beneficial to its development.</p> <p><b>"AUTOMATIC POLICY APPLICATION":</b></p> <p>New and innovative measures in the pilot free trade zones in China are applicable to Lin-gang Special Area.</p>	<p>Investment and operation facilitation based on fair competition; trade liberalization with high standards; financial management system that facilitates cross-border payment and receipt; international shipping management that is highly opened up, and human resource management that encourages the flow of talents.</p>	<p>Safe and orderly flow of international Internet data across national borders.</p>	<p>An internationally competitive tax system, and a comprehensive risk management system.</p>	<p>The management of Lin-gang Special Area is based on that of an economic special area. Lin-gang Special Area is granted more discretionary power for its own development, reform, and innovation. Under the premise of controllable risks, it can carry out innovative business in respond to market demands.</p>



**INDUSTRIAL  
LAYOUT**

**PAGE 14.**  
01. Artificial Intelligence

**PAGE 16.**  
02. Integrated Circuit

**PAGE 18.**  
03. Biomedicine

**PAGE 20**  
04. Aerospace & Aeronautics

**PAGE 24.**  
05. New Energy Vehicle

**PAGE 26.**  
06. Equipment Manufacture

**PAGE 28**  
07. Green Remanufacture

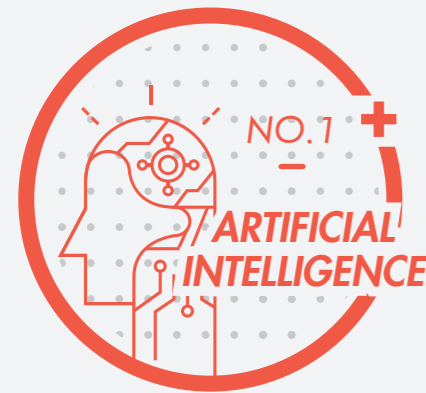
**PAGE 30.**  
08. Finance & New International Trade

**PAGE 33**  
09. Commerce, Culture, Tourism, Sports

**PAGE 36**  
10. Yangshan Free Trade Zone

**PAGE 44**  
11. Three Featured Industrial Parks

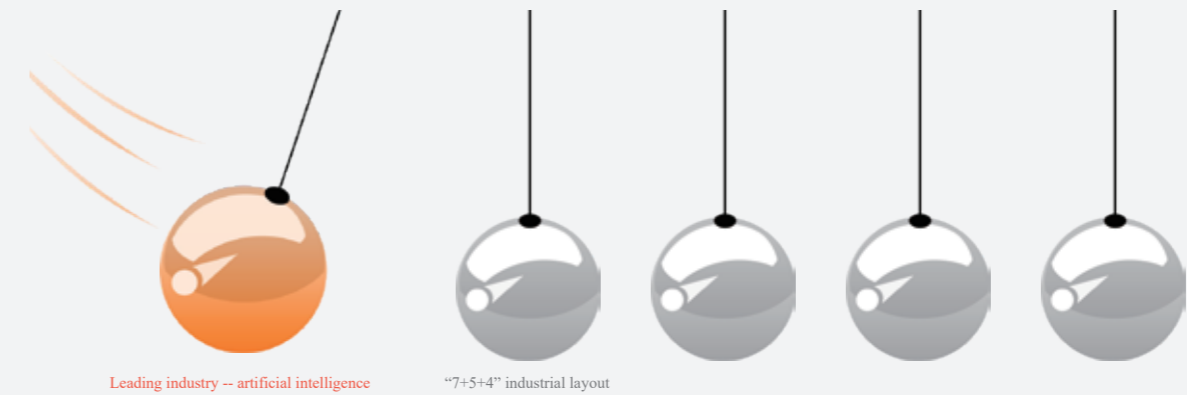
**PAGE 50.**  
12. Overview of Key  
Industrial Parks



### Industry Overview:

Lin-gang Special Area is the main battleground for Shanghai's initiative to become a scientific and technological innovation center with global influence. It is now sparing no effort to build an international smart manufacture center. Lin-gang Special Area will become a demonstrative zone for the innovative application of artificial intelligence with its leading technologies, diverse application scenarios, global innovation elements, and deep integration between AI and real economy. By 2025, AI-related industries will grow to 50 billion yuan. By 2035, the industries will grow to 200

billion yuan. Building on its solid industrial base for smart manufacture and industrial Internet, Lin-gang Special Area has attracted AI technology platforms and leading companies, such as Center for Excellence in Brain Science and Intelligence Technology (China Academy of Sciences), iFlytek, and Cambricon. Its industrial chain covers important links including hardware, algorithm, and application, providing a sound foundation for future development.



### Investment Advantages:

Functional technology transfer platforms are opened in Lin-gang, such as the Information and Innovation Center of China Artificial Intelligence Industry Alliance and Shanghai Lin-gang Artificial Intelligence Lab (Slailab), making the "AI Base in Lin-gang" a famous brand in the industry. Lin-gang Special Area cooperates with Shanghai Jiao Tong University and Fudan University for projects such as AI academician workstations, municipal research and transfer platforms for smart manufacture and industrial Internet, and World Laureates Association Annual Forum. The ecosystem for AI industry is well established in Lin-gang. Shanghai Guosheng Group and Lin-gang Group co-founded Shanghai AI Investment Fund, which has an initial scale of 10 billion yuan. The fund adopts a hybrid investment strategy of direct investment and investment through sub-funds, seizes the

opportunity offered by AI industry, and focuses on the core technologies and key applications of AI. It aims to nurture an industrial chain and ecosystem that connects cutting-edge technologies in the world and local application, strengthens indigenous innovation, application demonstration, policy support, and talent pooling, and accelerates the construction of an AI gravity center in Shanghai.

Lin-gang Special Area will implement the "Lin-gang AI+" campaign to encourage the trial run of the latest research results of global AI technologies. JD AI Research, Alibaba Cloud and other AI innovation centers are operational in Lin-gang, showing the prominence of AI clusters in the special area. Lin-gang Science and Technology City is chosen among the first application scenarios for new AI technology. It is building world-class application scenarios for "AI+ port transport".

#### Artificial Intelligence industry

#### International Innovation and Cooperation Zone

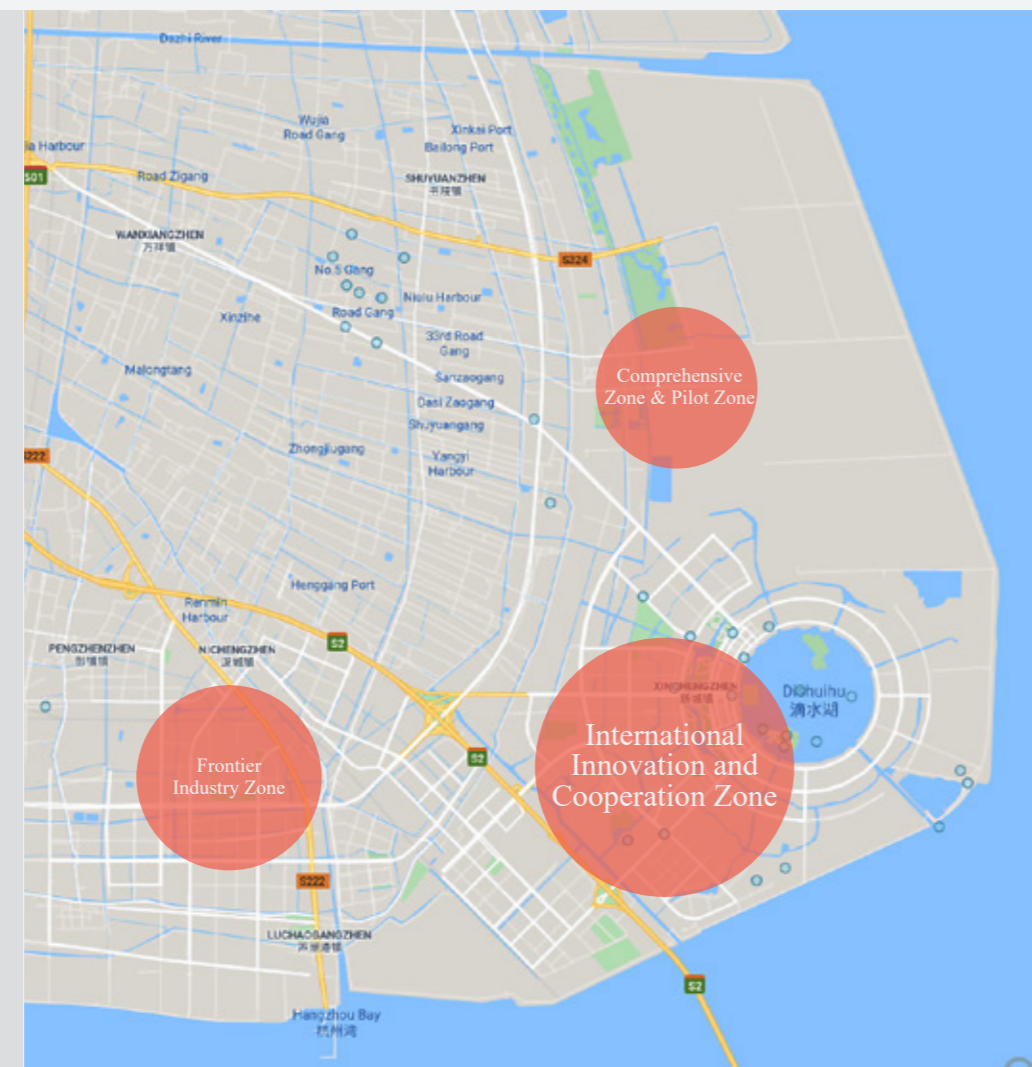
AI chip design, unmanned platform, tool software and smart information service, driverless vehicle, generic technology development and service.

#### Comprehensive Zone & Pilot Zone

Smart hardware, smart robot.

#### Frontier Industry Zone

Smart sensor, smart new energy vehicle, smart equipment & material.



### Industrial Policies:

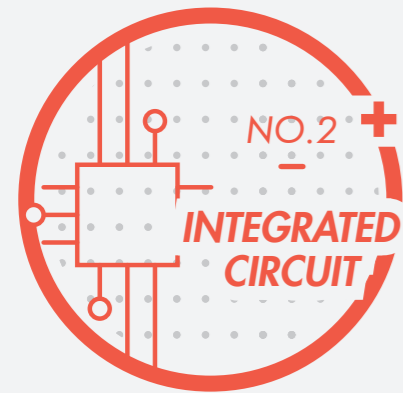
Support the clustering of major projects. Support the deep integration of artificial intelligence and other key industries such as integrated circuits, biomedicine, and aerospace and aeronautics, based on the functional positioning and industrial base. Support artificial intelligence's role as a catalyst for new and emerging industries such as smart connected vehicle, smart manufacture, and smart robotics.

### Investment Attraction Focus:

Deep integration projects between artificial intelligence and integrated circuits, biomedicine, aerospace and aeronautics, high-end equipment manufacture, or other strategic and emerging industries. Artificial intelligence technologies that serve as a catalyst for new and emerging industries such as smart connected vehicle, smart manufacture, and smart robotics. Enterprise for the development of key technologies or generic technologies of AI chip design, core algorithm, operation system, basic software, and smart sensors. World-class and diversified application scenarios in Lin-gang Special Area.



Several Measures to Promote the Clustering Development of Artificial Intelligence Industry in Lin-gang Special Area of China (Shanghai) Pilot Free Trade Zone



### Industry Overview:

Since its inauguration in 2003, Lin-gang has always been adopting a five-prong development strategy for industries, infrastructure, urban construction, ecology and environment, and city-industry integration. Integrated circuit is the staple product of information technology industry, it is also one of the pillar industries of Lin-gang in the past 17 years. It is worth noting that in 2017, Lin-gang put forward a “2+3+4” industrial layout, in which “4” stands for four major industries with integrated circuit industry being the largest one among them. Integrated circuit industry is a critical link in the industrial layout, as it connects artificial intelligence and information software on

one end, and smart equipment manufacture and aerospace and aeronautics on the other. After the official establishment of Lin-gang Special Area of China (Shanghai) Pilot Free Trade Zone in 2019, the state government asked Lin-gang to prioritize 4 development areas: 1. develop new types of international trade, 2. build a global shipping hub, 3. expand cross-border financial service, and 4. construct an open industrial system that is competitive in international markets. The integrated circuit industry in Lin-gang Special Area starts with equipment and materials, and its industrial chain keeps growing and improving. It responds to national strategies by attracting projects

#### Industrial Map of Integrated Circuit

##### Comprehensive Industrial Base for Integrated Circuit

Chip fabrication, equipment & materials, high-end packing & testing, etc.

##### International Innovation and Cooperation Zone

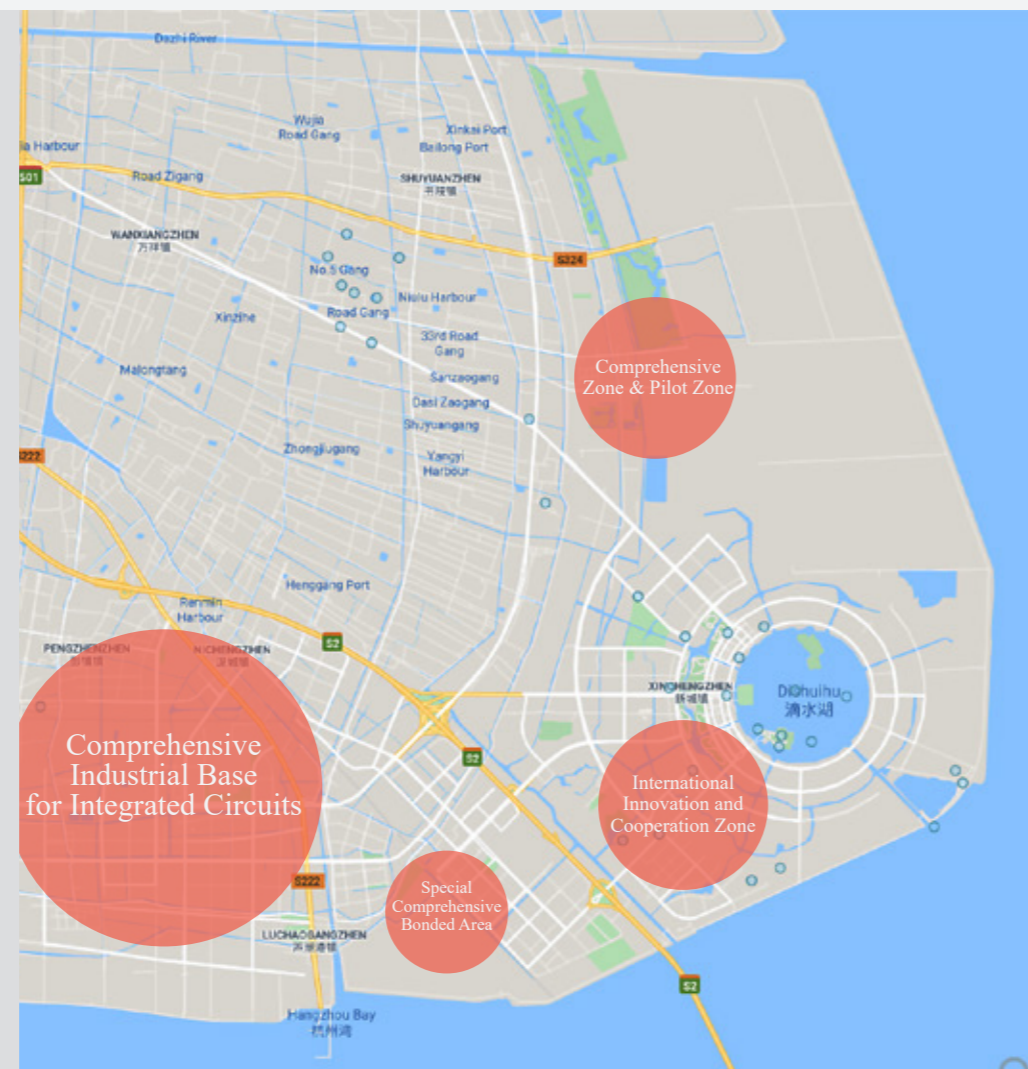
High-end chip design

##### Frontier Industry Zone

High-end chip design

##### Special Comprehensive Bonded Area

Chip fabrication, equipment & materials, high-end packing & testing, etc.



that aims to tackle “bottleneck” technologies in the industries. Breakthroughs are already made in EDA tools, large wafers, photoresist, and new storage medium. These loose links on the industrial chain of integrated circuit in Shanghai is strengthened.

Lin-gang is now home to more than 40 leading companies of the industry, including Huada Semiconductor, ZingSemi, Macronix, Galaxycore Microelectronics, AMEC, Cambricon, and iFlytek, forming an ecosystem for the entire industrial chain from chip design to specialized technique, new

storage, 3rd generation semiconductor, packaging and testing, equipment and materials. The investment attraction in Lin-gang Special Area is well targeted. The attracted projects in integrated circuits have a total contracted investment of more than 100 billion yuan, among which 3 major ones have at least 10 billion yuan of investment each. By 2025, the industrial output of the integrated circuits in Lin-gang will exceed 100 billion yuan, accounting for 20% of Shanghai.

### Investment Advantages:

Lin-gang was launched in 2003. In the next year, Shanghai listed integrated circuits as one of its pillar industries and published a series of favorable policies. For example, the Shanghai Integrated Circuit Equipment and Material Fund was set up to pool supportive policies and private investment. As a result, many outstanding companies in the industry came to Lin-gang, and the industrial development accelerated. In 2019, the Overall Plan for Lin-gang Special Area of China (Shanghai) Pilot Free Trade Zone clearly stated that Lin-gang Special Area will build clusters of frontier industries that tackle core technologies. It will establish a comprehensive industrial base for integrated circuits, improve the bonded supervision over the whole process of the import of materials and parts, support multinational companies to set up offshore R&D and fabrication centers, and promote the development of core chips, specialized technique, key equipment and basic materials. In May 2020, the Five-Year Development Plan for Integrated

Circuit Industry in Lin-gang Special Area mentioned that integrated circuit is the core and the basis of the next generation information technology, and it is one of the four clusters of frontier industries in Lin-gang Special Area, which will make efforts to further enhance the capacity of IC industry, attract more industrial resources and innovation factors, and build a world-class “Oriental Chip Hub”. All these will expand the development space of the industry and improve its overall influence. A large number of planned platforms, including Shanghai SMIT EDA Institute, Shanghai Lin-gang Power Electronics Institute, and Compound Semiconductor Innovation Research Platform of SITRI, ensure the growth of indigenous innovation of integrated circuits. Lin-gang Special Area has set up several funds to attract private investment into integrated circuit industry, such as a special development fund of 100 billion yuan, Shanghai Industrial Fund for Integrated Circuit Equipment and Materials (total size 10 billion yuan, initial size 5 billion yuan), and Shanghai More than More Fund.

### Industrial Policies:

In October 2019, Lin-gang Special Area Administration announced 16 policies to promote industrial development and 40 supportive measures to develop 4 pillar industrial (the “1+4” industrial policies), lending all-round support to the project construction, development scale, M&A, equipment purchase, R&D expenditure, EDA/IP purchase, tape out, testing and validation, promotion and application, and electricity price of IC companies. As a result, Lin-gang now offers the best policy support to the IC industry in China.

### Investment Attraction Focus:

R&D centers or industrial projects by IC companies with major global or domestic influence. Offshore R&D centers or fabrication centers by multinational companies in IC industry. Companies that are certified as a national or municipal major project will get extra fiscal support.



Several Measures to Promote the Clustering Development of Integrated Circuit Industry in Lin-gang Special Area of China (Shanghai) Pilot Free Trade Zone



### Industry Overview:

Biomedicine is a fundamental industry closely linked to people's livelihood. As a sunrise industry and one of the strategic emerging industries in Lin-gang Special Area, it has strong growth potential, affects industries in the upstream or downstream, and boosts the development of other industries. Lin-gang Special Area is building a cluster for international medical services. By allowing high-level opening-up, unprecedented favorable policies, and visible investment benefit, Lin-gang provides the innovation-drive development of biomedicine industries with an environment that has a high

concentration of innovation factors, complete systems and functions, and active market players. More than 80 companies in 15 related industries have set up presence in Lin-gang, including leading companies in each sector such as TopAlliance (the first producer of PD1 monoclonal antibody in China), Dejian (R&D and commercialization of protein and polypeptide drugs), Celgene Biopharma (R&D, manufacture and sales of recombinant protein and monoclonal antibody drugs), and Dragon Sail Pharmaceutical (R&D and manufacture of monoclonal antibody cancer drugs).



### Investment Advantages:

Lin-gang Special Area regards biomedicine as one of its 4 pillar industries since the very beginning and provides supports in tax, finance, international trade, planning, and land provision. Lin-gang is sparing no effort to build the best clinical research hospitals in the world. In the process of building a cluster of international medical services, it allows, in certain hospitals, the use of urgent clinical drugs, medical equipment and new cancer drugs that are approved overseas, and gives impetus to the new development model combining scientific research, clinical trial and medical services. Lin-gang Special Area prioritizes biomedicine industry, attracts many leading companies, and forms an industrial chain across the upstream and downstream. It will also adopt an innovative incubation model of "base + project + government funds" to provide investment and registration service, attract international innovation-driven companies of biotechnology, medical care, medicine, and big health to come to Shanghai, help such companies to localize smoothly, and support international innovation-driven companies, investment institutions and industrial partners to build a new industrial ecosystem.

### Industrial Policies:

To support the bio-pharmaceutical industry, Lin-gang Special Area has announced 10 favorable policies in the Several Measures to Promote the Clustering of Biomedicine Industry in Lin-gang Special Area of China (Shanghai) Pilot Free Trade Zone: Highlight high-end "R&D + manufacture + service". Focus on areas such as antibody drugs, biopharmaceuticals, cell therapy, precision medicine, and high-end medical equipment. Construct a complete industrial chain for life science. Support the establishment of producer service providers for outstanding biomedicine companies and research institutes in China and the rest of the world. Support the coordination between Zhangjiang and Lin-gang. Respond to the commercialization demand of high-end biomedicine projects. Support national industrial preparation projects that are unprecedented in China.

### Investment Attraction Focus:

Launch the pilot demonstration zone of precision medicine in Lin-gang Special Area, with a focus on precision medicine, precision medical equipment, precision diagnosis and health service. Highlight high-end "R&D + manufacture + service", with a focus on key projects or companies in biotechnology drugs, precision medicine, and high-end medical equipment. Construct a complete industrial chain for biomedicine technology. Support the establishment of producer service providers for outstanding biomedicine companies and research institutes in China and the rest of the world. Respond to the commercialization demand of high-end biomedicine projects.

### Industrial Map of Biomedicine Industry

#### Life Science Industrial Zone

Biomedical, high-end medical equipment, international medical service

#### International Innovation and Cooperation Zone

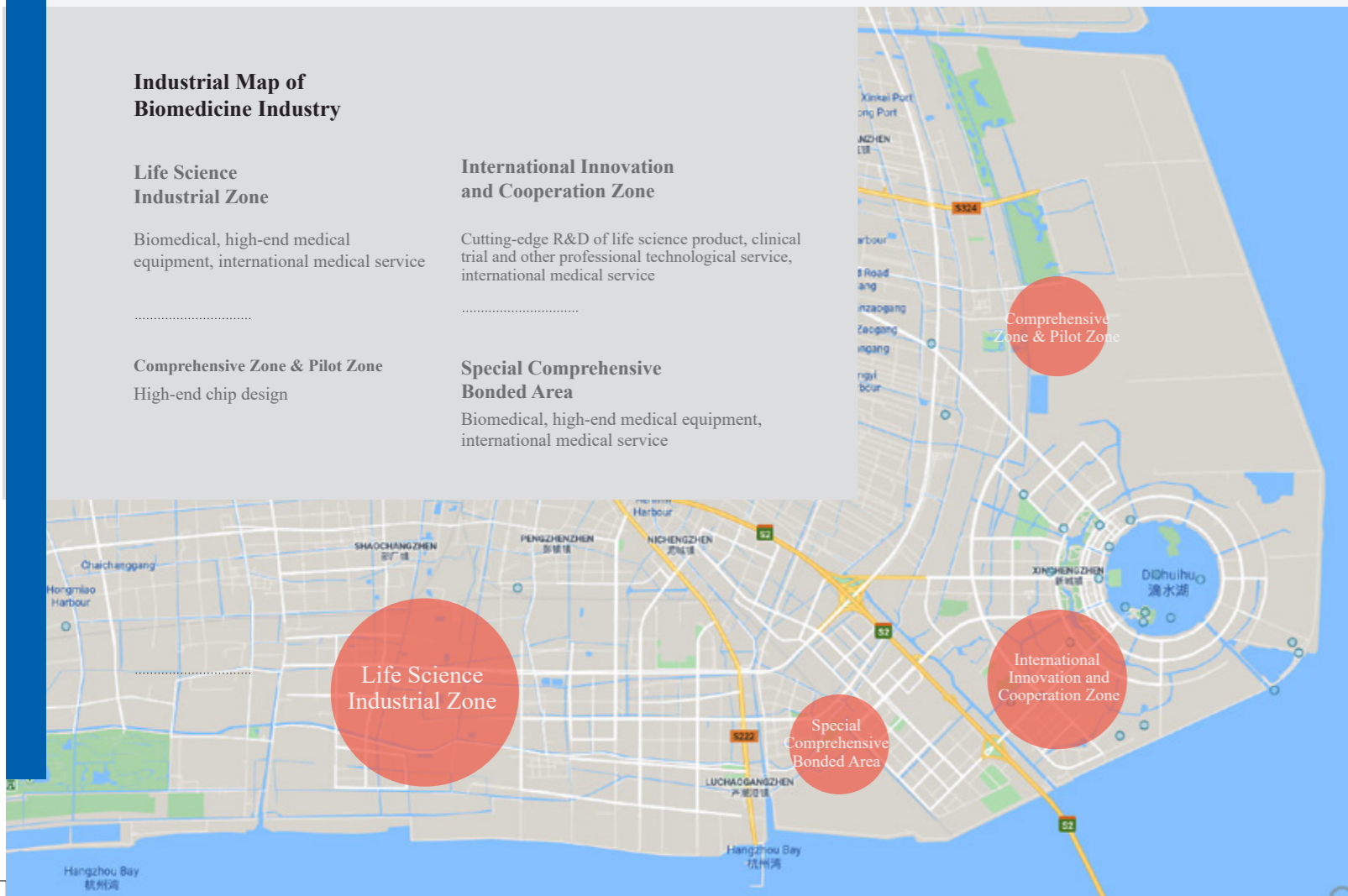
Cutting-edge R&D of life science product, clinical trial and other professional technological service, international medical service

#### Comprehensive Zone & Pilot Zone

High-end chip design

#### Special Comprehensive Bonded Area

Biomedical, high-end medical equipment, international medical service



Several Measures to Promote the Clustering Development of Biomedicine Industry in Lin-gang Special Area of China (Shanghai) Pilot Free Trade Zone



### Industry Overview:

Since its inauguration in 2003, Lin-gang sticks to the principle of “embodying national strategy, Shanghai advantages and international competitiveness”, and became very quickly a national demonstration base of new industrialization industry (aerospace and aeronautics). In many years, it regards the promotion of aviation industry and the nurture of aviation industrial chain as an important direction of development. In terms of aircraft manufacture, Lin-gang has attracted leading companies and

research institutes such as AECC Commercial Aircraft Engine, Aircraft Engine Research Institute of Shanghai Jiao Tong University, and Innovation Academy for Microsatellites of CAS, and deployed a cluster of aerospace industry that centers on the manufacture of engine and key parts of commercial airplanes and covers related sectors such as aerospace material, airborne equipment, environmental control, maintenance and refit, and air service.

The start of the second phase of SAEM Aircraft Equipment Project will forcefully enhance the smart manufacture of aircrafts in Lin-gang, underlining its importance and visibility in the industrial layout of the city.

After the inauguration of Lin-gang Special Area, an overall development plan is set for the 24.7 km<sup>2</sup> in the southern part of Pudong International Airport. According to that, the area will become a leading area for international frontier and emerging industries, which centers on a world-class aviation industry with global influence and innovation capability.

By 2030, the industrial output will exceed 100 billion yuan, attracting 100-150 first-rate companies and more than 30,000 talents.

By 2035, the industrial output will exceed 200 billion yuan, attracting 200-300 first-rate companies and more than 50,000 talents.

#### Aerospace and aeronautics industry will be found in 3 clusters

##### Southern Part of Pudong International Airport

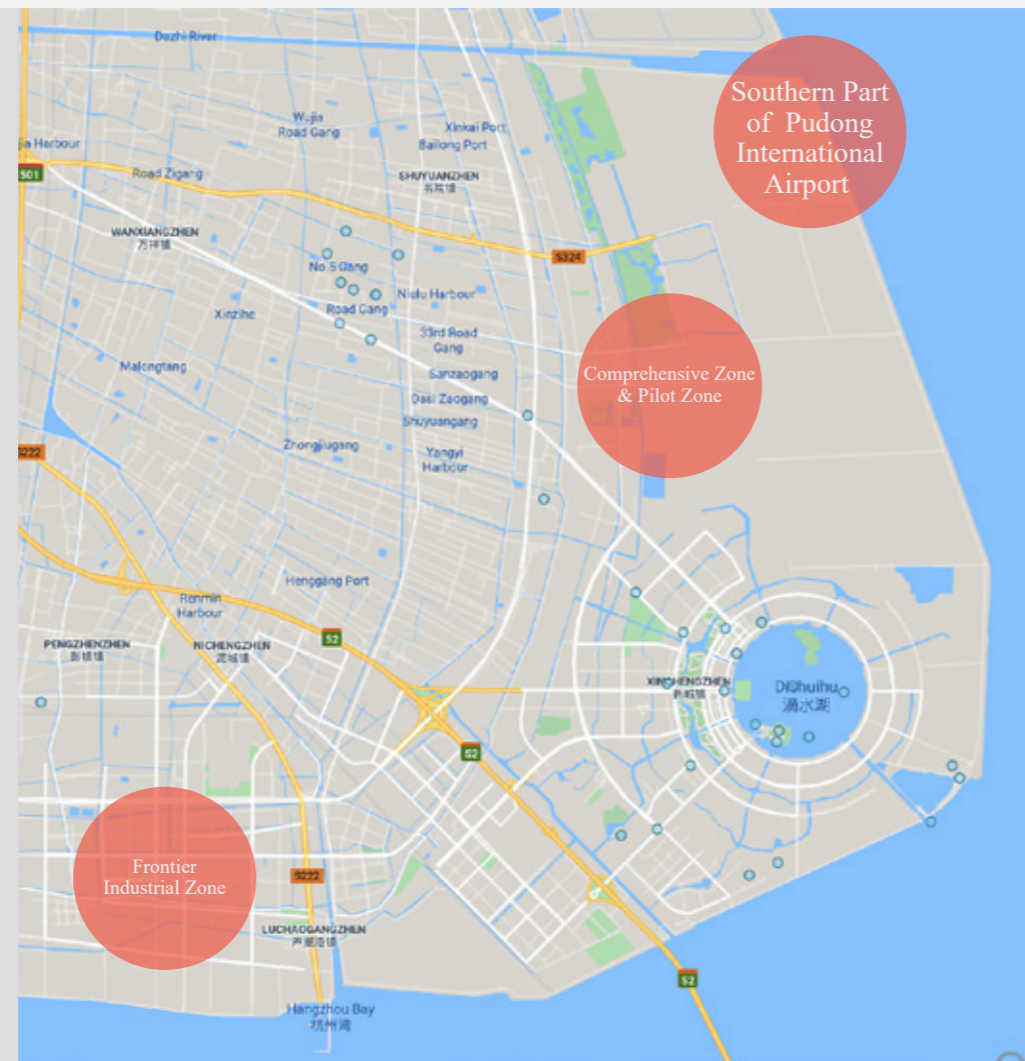
Large aircraft design & manufacture, manufacture of avionic equipment and core parts, manufacture of high-performance spacecraft

##### Frontier Industrial Zone

Engine manufacture and assembly, compound material for aerospace and aeronautics, general aviation

##### Comprehensive Zone & Pilot Zone

Microsatellite, BeiDou Navigation Satellite System



### Investment Advantages:

As a new strategic center for the resource allocation of international aviation industry, Lin-gang Special Area sees its economy output from the world-class aerospace industry growing steadily and rapidly.

It will build a number of research and innovation platforms for the key technologies and core parts of civil aviation, functional platforms for the research and technology transfer of avionics and aircraft engines, and testing and validation platforms for the new materials and products of civil airplanes. Its world-class capacity of sci-tech

innovation will be enhanced continuously. As first-rate multinational companies in research, manufacture, and logistic in the world come to Lin-gang Special Area, some with their regional headquarters, top talents such as researchers, engineers and highly skilled workers in various areas also flocks to Lin-gang. Their presence injects new impetus to the development of aerospace and aeronautics industries and provides strong support and assurance to the aviation industrial base with global influence.



### Industrial Policies:

To support aerospace and aeronautic industry, Lin-gang Special Area has announced 10 favorable policies in the Several Measures to Promote the Clustering of Aerospace and Aeronautic Industry in Lin-gang Special Area of China (Shanghai) Pilot Free Trade Zone.

#### Support global cooperation in major projects:

With a focus on large airliners and civil aircraft engines, Lin-gang lifts restrictions on registered capital and investment methods, supports aerospace and aeronautic institutes with domestic and international competitiveness to set up R&D centers and invest in industrial projects. The specific incentives and supportive measures will be decided by the expert review of Lin-gang Special Area Administration.

#### Support breakthroughs in core products and technologies:

Lin-gang Special Area Administration follows the annual requirement from the central or municipal government on industrial development or technology innovation, encourages the research and development in cutting-edge technologies for large airliner, aircraft engine, drone, and

microsatellite, aims to make breakthroughs in their core spare parts, fundamental materials, advanced process techniques, and industrial technologies, solicits product requirements in aerospace and aeronautics, selects premium projects, and organizes international bidding to find the best team to tackle those needs. Financial support worth no more than 50% of the technology research expenditure is granted to the unit (or union) that makes the breakthrough of core technology, based on the project requirement and result of expert review.

*Support the development of complete industrial chain and industrial cluster:*

Support the attraction and incubation of backbone enterprises that have sizable shares in domestic and international aerospace and aeronautic markets, as well as medium, small, and micro enterprises. Accelerate the establishment of supportive institutes and industrial projects for fundamental research, technology development, product research, and experimental validation. Form synergy among projects in the industrial cluster. Promote the development of whole industrial chain in aerospace and aeronautics, such as general assembly and delivery, manufacture support, operation, and maintenance. If a company has an actual investment of 50 million yuan or above, it will receive a reward worth 3%-5% if its certified paid-in capital is equal to or more than 50 million yuan, with the same company receiving no more than 10 million yuan. The amount of reward is calculated based on the actual paid-in capital when it first exceeds the above-mentioned threshold, and will be granted in three years in the rate of 40%, 30%, and 30%.

*Support transactions and purchases within Lin-gang:*

Aviation/aerospace enterprises that purchase products or services exceeding 5 million yuan annually from non-related enterprises in Lin-gang Special Area will be given a reward equal to 2 percent of the purchase invoice amount, with a maximum reward of 3 million yuan.

*Support the large-scale development of enterprises:*

- (1) R&D or producer service enterprises that achieve for the first time an annual sales revenue exceeding 50 million yuan, 100 million yuan, 500 million yuan, 1 billion yuan and 2 billion yuan will respectively be offered a one-off reward of 1 million yuan, 1.5 million yuan, 2 million yuan, 3 million yuan and 5 million yuan maximum. The difference between ranks will be rewarded when the enterprise upgrade to a higher rank.
- (2) Manufacturing enterprises that achieve for the first time an annual sales revenue exceeding 500 million yuan, 1 billion yuan, 5 billion yuan and 10 billion yuan will respectively be offered a one-off reward of 1 million yuan, 2 million yuan, 3 million yuan and 5 million yuan maximum. The difference between ranks will be rewarded when the enterprise upgrade to a higher rank.

*Support merger and acquisition:*

For successful acquisitions of domestic or foreign enterprises or key R&D institutions in the aviation/aerospace industry chain, which cost more than 10 million yuan, a subsidy equal to 5% of the actual transaction cost is granted, with the maximum accumulative amount of 5 million yuan.

*Support demonstration & application:*

Aviation/aerospace manufacturing enterprises are supported to strengthen their IT application, upgrade intelligent equipment continuously, and form a number of exemplary application cases. Aviation/aerospace equipment manufacturers recognized as state-level intelligent manufacturing demonstration enterprises or demonstration workshops will be offered a one-off subsidy of 2 million yuan in addition to the municipal funding. Aviation/aerospace equipment manufacturers recognized as municipal intelligent manufacturing demonstration enterprises or demonstration workshops will be offered a one-off subsidy of 1 million yuan.

*Support testing and validation:*

The financial support for enterprises that conduct function, performance, reliability, compatibility, failure analysis or other testing or validation for engineering prototypes or samples will be rewarded 50% of the actual cost with a maximum of 2 million yuan each year.

*Support the obtaining of qualifications:*

Enterprises that have obtained aviation/aerospace qualifications recognized or issued by China will be given a one-off reward of 300,000 yuan maximum for each qualification, with a maximum of three qualifications for each enterprise. Enterprises that have obtained qualifications recognized or issued by international institutions or advanced countries in the aviation/aerospace field will be given a one-off reward of 1 million yuan maximum for each qualification, with a maximum of three qualifications for each enterprise.

*Other supportive measures:*

Advanced aviation/aerospace enterprises (institutions) in Lin-gang Special Area will be included and classified in a database to enable precise policy implementation, priority in support, and combined support. A professional service team will be set up to assist enterprises (institutions) in the database in applying for State-level, Shanghai municipal or Lin-gang

Special Area supportive policies for various resources (including improving land use efficiency, etc.), finance and taxation (including income tax, investment and financing, listing incentives, etc.), investment promotion and enterprise introduction (including enterprise settlement, headquarters economy, etc.), human resources (including talent introduction, training, housing/rental subsidies, medical insurance, children's schooling, other incentives and subsidies), industrial progress (including breakthroughs in key core technologies and products, industrial capacity improvement, etc.), production-education integration (including industry-university-research cooperation, skilled personnel training, etc.), scientific and technological innovation (including functional platforms, R&D subsidies and incentives, etc.), subsidies for R&D premises, international air traffic rights, international air services, and culture and tourism services.

**Investment Attraction Focus:**

**“Aviation+” core industries:** Aircraft general assembly and core spare parts: general assembly of passenger airliner, structural parts, electromechanical system, interior components and seats, compound materials, standard parts, etc.

**“Aviation+” pillar industries:** Powertrain: powertrain assembly, nacelles, core spare parts, new materials, power control system, and power experiments for aviation, aerospace, high-speed railway, metro, ships, and automobiles.

**Electronics:** core processing system, display system, airborne maintenance and fly data record system, comprehensive monitor system, communication system, navigation system, etc.

**Supply chain & logistics:** Asia-Pacific supply chain management center, bonded logistics of core parts, transit of international goods, international distribution and delivery, cold-chain logistics, bonded processing, etc.



Several Measures to Promote the Clustering Development of Aerospace & Aeronautic Industry in Lin-gang Special Area of China (Shanghai) Pilot Free Trade Zone



### Industry Overview:

Smart connected new energy vehicle is a pillar industry in Lin-gang Special Area. Starting from 2007, leading car companies has set up projects in Lin-gang, such as the SAIC-branded vehicle and its new energy vehicle, Benz remanufacture, and Yanfeng KSS. Along with them, a large number of supportive companies in the upstream or downstream of industrial chain also established in Lin-gang, forming a whole industrial chain with complete functions. The clustering effect of automobile industry in Lin-gang starts to take shape. In 2018, the vehicle of EV31 project of SAIC Maxus hit the road, making an important addition to the new energy vehicles manufactured in Lin-gang. In the same year, the electric vehicle giant in the world, Tesla, announced its plan to open a factory in Lin-gang industrial zone, which is not only the largest foreign-invested manufacture project in the history of Shanghai, but also the first project in China after it lifts the restriction of foreign shareholding in electric vehicles. In 2018, the total industrial output of automobile OEM and spare parts in Lin-gang reached 38 billion yuan.

In Lin-gang Special Area, the development of new energy vehicle is already a national strategy. Thanks to top players such as Tesla and SAIC Roewe, the area is highly active in investment attraction across the industrial chain, and it is negotiating with many potential companies. Established Chinese brands, top international brands and nascent brands all flourish in this place. The production capacity of completed projects keeps growing, the construction of ongoing projects is accelerating, and the siting and registration of projects in the pipeline also speeds up. A world-class industrial cluster for new energy vehicle is in the making. In the next 5 years, annual vehicle production in Lin-gang will reach 900,000, with a yearly industrial output of 200 billion yuan. In terms of the innovation and industrialization of smart connected vehicles, Lin-gang has built a comprehensive demonstration zone for smart connected vehicles. The close testing and experience zone for smart driverless connected vehicles covers 7 km<sup>2</sup>. The phase 1 of open testing road for driverless vehicles stretches 26.1 km, and it can simulate

traffic conditions for expressway, urban roads, rural roads, logistics and warehouse scenarios. Building on the comprehensive demonstration zone for driverless cars, Lin-gang Special Area has attracted a large number of famous high-tech companies in the industry, such as Horizon Robotics, Stratosphere, TrunkTech, and Tu Simple. The infrastructure for smart connected new energy vehicles is also improving. In terms of the logistics infrastructure for automobile trade, Shanghai South Port, a type-1 open port in China, handled the loading and unloading of 400,000 vehicles in 2018, ranking among the top 6 in the country. In Lin-gang Logistics Park and the land area of Yangshan Bonded Port, well-known automobile companies including BMW, Volkswagen and Porsche have set up their Asia-Pacific distribution centers, and a large number of shipping, logistics, and trade companies are there to provide related services, such as Maersk. At present, in addition to the assembly plants of SAIC Roewe, SAIC Maxus, and Tesla, there are also many providers of automobile parts,

such as Mercedes Benz, Novare NEV, and Yanfeng. A number of new projects will be established in Lin-gang very soon, such as the high-end

aluminum material of Aluminum Corporation of China, the electric drive project of CRRC, the assembly and logistic center of Saint-Gobain, SAS

project, the car seat project of Lear Corporation, and the key structural part project of MS Autotech.

### Investment Advantages:

Lin-gang Special Area will step up its support in policy, finance, and others, and focus more on future cars that are “smart, connected, and environment friendly”. It will choose innovation projects with the strongest research ability and biggest application potential and promote the development of new energy vehicles and smart connected vehicles through the functional platforms linking different sectors and industries.

The smart new energy vehicle industry is developing in large scale in Lin-gang. With such a good momentum, Lin-gang will further stimulate the economic development of other areas and build a world-class cluster for new energy vehicles. Companies can choose from a rich pool of standard workshops in Lin-gang Special Area. Projects go through the registration and approval process very

fast because Lin-gang provides full life-cycle services. The planning of smart connected new energy vehicle industry focus on solving bottleneck issues in the key technologies. It will continue to improve the industrial chain, enrich the supply chain of auto parts, and enhance the competitiveness of the new energy vehicle industry.

### Industrial Policies:

In terms of supportive policies, Lin-gang Special Area is the main battleground for Shanghai’s effort to build a world-class automobile cluster. The 50-point Special Policy clearly listed vigorous measures such as the support to new energy and smart connected vehicle projects, the priority given to platforms, and the support for IPO and equity investment.

### Investment Attraction Focus:

Key projects of smart and connected new energy vehicles of 4 major types: manufacture, application, service, and functional platform.



Several policies to Promote Industrial Development in Lin-gang Special Area of China (Shanghai) Pilot Free Trade Zone



Several Opinions on the Implementation of Preferential Policies to Boost High-quality Development of Lin-gang Special Area of the China (Shanghai) Pilot Free Trade Zone by CPC Shanghai Committee and Shanghai Municipal People’s Government



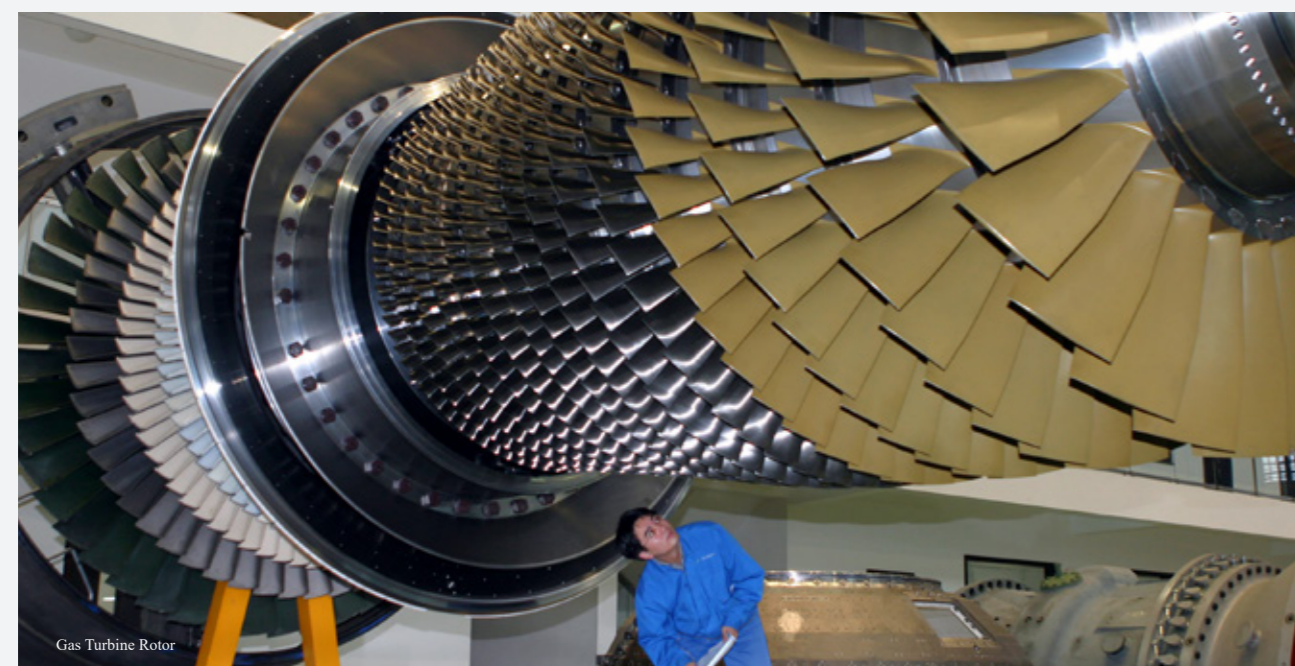
### Industry Overview:

Since its inauguration in 2003, the Lin-gang Base, aiming at “high-end manufacture and original design manufacture”, has established a “6+1” industrial layout with new energy equipment, automobile and auto parts, core parts of ships, engineering machinery, civil aviation supply, and strategic and emerging industries. The Overall Plan for Lin-gang Special Area of China (Shanghai) Pilot Free Trade Zone clearly stated that Lin-gang will establish clusters of frontier

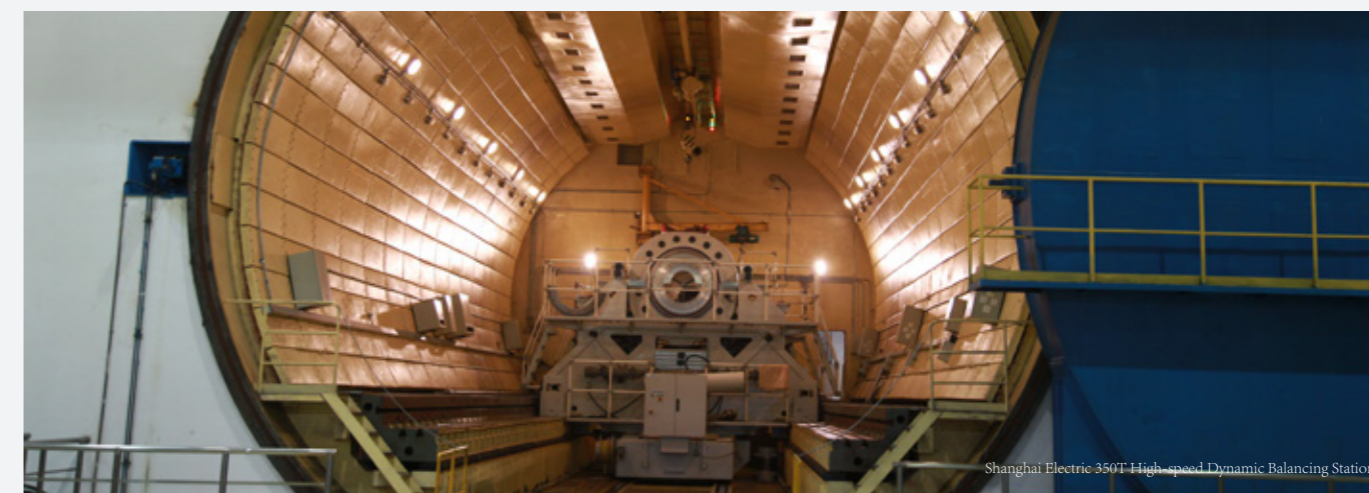
industries that bring breakthroughs in core technology and develop key sectors such as core chips, specialized techniques, key equipment, and basic materials. Marine power industry started early in Lin-gang, and it has already formed a complete industrial chain. However, Lin-gang still needs to make efforts to “localize” the core technologies for high-end equipment manufacture after it became a special area in the China (Shanghai) Pilot Free Trade Zone. A large number of high-end equipment corporations have come to Lin-gang Special Area, such as

SWS Offshore, CSSC-MES, CME WARTSILA, Shanghai Electric Nuclear Power Equipment, and SANY, laying a solid foundation for the industrial cluster. Lin-gang is one of the two core areas in Shanghai to develop marine economy. It focuses on high-end equipment manufacture such as offshore drilling equipment and deep-sea industry. Starting from 2018, the high-end manufacture and strategic emerging industries are coming to Lin-gang at a higher speed. Chinalco, China Transport Telecommunications and Information

Center, Institute of Engineering Thermophysics of China Academy of Sciences, and another 8 large-scale state-owned enterprises, research institutes or leading companies are registered in Lin-gang. They have focused on the bottleneck issues of key technologies, installed large science facilities, accelerated the process of industrialization, promoted the deep collaboration of the industry, improved industrial ecosystem, and build a vibrant industrial cluster.



Gas Turbine Rotor



Shanghai Electric 350T High-speed Dynamic Balancing Station

### Investment Advantages:

The ship and offshore engineering equipment industry in Shanghai has a layout of “two hubs and one belt”, with one hub being the research and manufacture of high-end offshore engineering in Lin-gang, and the other the general assembly of ship and offshore engineering in Changxing Island. In 2018, Shanghai Offshore Manufacture Innovation Center was unveiled in Lin-gang, which has an operation model combining features of a company, an alliance, and a fund. The Center gathers industrial resources, facilitates cooperation and innovation, and aims to make breakthroughs in the generic and bottleneck technologies of offshore engineering. It will boost and promote the overall quality of the marine engineering in China through the participation in the entire industrialization process, from technology innovation to transfer and application.

As one of the places with the highest concentration of marine engineering equipment manufacturers, Lin-gang has a number of famous companies in offshore equipment, forms a relatively complete industrial chain, and nurtures a batch of premium projects in deep-sea equipment and deep-water exploration. Smart manufacture is the trend and direction of industrial development. Lin-gang has built clusters of new energy equipment, large ship parts, automobile and auto parts, offshore engineering equipment, engineering machinery and equipment, civil aviation equipment, and remanufacture. In May 2018, Lin-gang announced its plan for the comprehensive demonstrative zone for unmanned systems in land, sea, and air, that is, for driverless cars, unpowered ships, and drones. At present, a number of companies have already started technical validation in the experimental scenarios in Lin-gang.

### Industrial Policies:

In the 50-point special policy of Lin-gang Special Area, it is clearly stated that key projects in smart manufacture and high-end equipment will be prioritized in Lin-gang. Supportive functional platforms such as engineering research centers and key laboratories will be built in Lin-gang. Guidance will be provided to the establishment of key science academies, research institutions, standard setting companies, inspection and testing institutions, and metrology and measurement platforms. Companies are encouraged to cooperate with research institutes and other companies on the industrial chain to make innovation and build industrial innovation centers.

### Investment Attraction Focus:

Target bottleneck technologies based on national demand for development, such as next generation IT technology, chips, AI, aerospace and aeronautics, laser, and other smart manufacture.



Several policies to Promote Industrial Development in Lin-gang Special Area of China (Shanghai) Pilot Free Trade Zone



Several Opinions on the Implementation of Preferential Policies to Boost High-quality Development of Lin-gang Special Area of the China (Shanghai) Pilot Free Trade Zone by CPC Shanghai Committee and Shanghai Municipal People's Government





### Industry Overview:

As one of the key projects of the comprehensive reforms in Pudong and a upscale representation of circular economy, remanufacture is attracting wider and wider attention. In 2012, the first remanufacture industrial park opened in Lin-gang, which laid the foundation for a national-level remanufacture industrial base. A number of remanufacturers are already registered and operational in Lin-gang, among them internationally famous brands such as Caterpillar, Mercedes-Benz part remanufacture plant of Daimler Group, Shanghai Yixin Remanufacture, and Boche Renewable Resources.

The General Plan for Lin-gang Special Area of China (Shanghai) Pilot Free Trade Zone announced the construction of a maintenance and green remanufacture center facing the counties and regions along the Belt and Road Initiative, the establishment of a green certification and rating system, the support to the inbound maintenance and remanufacture of numerically-controlled machine tools and engineering equipment in the comprehensive bonded area, and the improvement of the international competitiveness of high-end and smart remanufacture industry.

### Investment Advantages:

Lin-gang Special Area boasts unique advantages in green remanufacture. It has a complete industrial chain. In addition to basic services such as standard workshops, logistics, policy interpretation and human resource management, it also provides special services that include the supply of raw materials, trusted quality control, technical support, centralized precleaning, and disposal of dangerous solid wastes.

Many heavy-weight projects can be found in Lin-gang, such as GE Aviation (China) Smart Manufacture and Remanufacture Innovation Center. The remanufacture industrial system is comprised of technological research centers (National Key Laboratory for Remanufacture, and National Engineering Center for Mechanical Product Remanufacture) and public services platforms (such as on-site training centers



and testing and qualification centers). Building on its industrial base, policy advantages, and technical support, Lin-gang is sparing no effort to create an industrial ecosystem for remanufacture industry with global influence, and provide endless driving force for the development of smart, low-carbon, and high-end manufacture.

Lin-gang is accelerating the speed of project attraction and base construction to build a national demonstration zone for import equipment remanufacture.



### Industrial Policies:

Continue to promote the concentration of major industrial projects in Lin-gang Special Area. Lin-gang Special Area will have a priority in having national industrialization programs and major projects undertaken by Shanghai, especially in areas such as civil aviation engine and gas turbine, high-end numerically controlled machine tool and its basic equipment, deep-water and ocean offshore engineering equipment and material, and high-end energy equipment. Transport equipment (metro transport, new energy vehicle, smart car), basic equipment (construction machinery), and key projects in strategic and emerging industries (next generation information technology) will be encouraged

to locate in Lin-gang Special Area to further enhance its capacity for high-end manufacture and extreme manufacture. Encourage the clustering development of remanufacture industry. Provide facilitation measures for the inspection, quarantine, and customs clearance for inbound remanufacture in Lin-gang Special Area using the bonded policies for remanufacture. Establish a joint development mechanism between Lin-gang Special Area and municipal industrial park brands. Attract high-level projects to Lin-gang Special Area. The incremental benefit gained in Lin-gang will be shared according to a predetermined ratio.

### Investment Attraction Focus:

Remanufacture projects or innovation platforms in aviation engine parts, computer and telecommunications equipment, construction machinery, automobile engine, industrial surface preparation, and printing supplies.



Several policies to Promote Industrial Development in Lin-gang Special Area of China (Shanghai) Pilot Free Trade Zone



Several Opinions on the Implementation of Preferential Policies to Boost High-quality Development of Lin-gang Special Area of the China (Shanghai) Pilot Free Trade Zone by CPC Shanghai Committee and Shanghai Municipal People's Government



### Industry Overview:

It is of great significance to the open economy in Lin-gang Special Area to benchmark its practices against international high standards, and accelerate the high-quality development of modern service industries. Lin-gang Special Area will fully release its institutional advantages in trade and investment facilitation, make good use of its openness in modern service sector, focus on the development of cross-border finance, new international trade, digital economy and other newly

emerged businesses, constantly enhance its ability to allocate global resources and factors, and become a model for international modern services and a modern service center with global influence.

The only dispute settlement organization for securities and futures in China, the first joint-venture financial management company in China, and other agencies are opening in Lin-gang. A number of domestic and international financial organizations and enterprises, such as Bank of China, are registered in the area. National Base for the Transformation and Upgrade



of International Trade (Automobiles and Auto Parts) and Shanghai International Service Trade Demonstration Base are unveiled. A modern service system with rich business types, vibrant innovative activities, compact spaces, and complete functions is taking shape.

### Investment Advantages:

According to the "Five Important Elements" positioning by President Xi and the requirement of the General Plan of Lin-gang Special Area by the State Council, Lin-gang Special Area, in addition to applying all the open and innovative measures of the pilot free trade zones in China, is accelerating the process of harmonizing its investment and trade rules with the most competitive FTZs in the world. It

focuses on the collection and allocation of global high-end resources and factors, promotes the facilitation and liberalization of cross-border investment and trade, pilots more vigorous open policies and more stressful pressure tests, and builds a modern service cluster based in Shanghai, benefiting China, and facing the entire world.

### Industrial Policies:

Study and publish special industrial policies to encourage the opening-up and innovation in finance and trade, in order to promote the clustering development of new businesses such as cross-border finance and new international trade. Pilot innovative measures such as the streamlined settlement of cross-border RMB, cross-border transfer of domestic trade financing assets, and registration reform of foreign borrowing in companies with good track record. A modern

service system of "2+X" that centers on cross-border finance and new international trade is taking shape. Functional policies, fiscal support, tax breaks, and other supportive measures aim to ensure the proper development of premium companies and talents in Lin-gang. At the same time, key institutions and companies will receive tailor-made support for their operation and development.

**30-Point Policy for Finance:** On 14 February 2020, the PBOC (People's Bank of China), CBIRC (China Banking and Insurance Regulatory Commission), CSRC

(China Securities Regulatory Commission), SAFE (State Administration of Foreign Exchange) and Shanghai Municipality jointly

issued Opinions on Further Accelerating the Construction of Shanghai International Financial Center and the Integrated Development of the Yangtze River Delta. The Opinion closely follows the "Five Important Elements" of President Xi and the requirement of the General Plan of Lin-gang Special Area, starts from its functional positioning and industrial

layout, pilots more open and facilitated financial policies, and lends strong support to Lin-gang to attract high-end resources and factors of finance, technology, and talent, and speed up the construction of a special economic functional zone with more international market influence and competitiveness.

**50-Point Policy for Finance:** On 8 May 2020, Lin-gang Special Area announced Several Measures to Comprehensively Promote the Financial Opening-up and Innovation in Lin-gang Special Area of China

(Shanghai) Pilot Free Trade Zone (50-Point Policy for Finance), which contains 5 important messages: First, comprehensively implement the opening-up of financial sector

on all fronts, at deep levels and with high standards, with an effort to attract more foreign institutions. Second, further enhance the institutional innovation and pressure test of the open economy, with an effort to ensure the financial innovation faring well in the long run. Third, nurture domestic financial institutions and related agencies that are competitive in domestic and international markets for the allocation of financial resources, with an effort to make a name for local financial brands.

Fourth, establish and improve the ecosystem for finance to support real economy, with an effort to help companies thrive. Fifth, enhance the tailored services to the financial institutions, with an effort to make financial resources stay in Lin-gang. The publication of Several Measures is a way to fully implement the “Five Important Elements” positioning by President Xi, the design and planning of the General Plan of Lin-gang Special Area, and the specific requirements in the 30-Point Policy for

Finance. It serves the opening-up strategy of China and brings Shanghai closer to its goal of becoming an international financial center. It is another major move to promote the financial opening-up in Lin-gang Special Area on deeper levels, in broader areas, and with stronger determination, and a vivid example of serving national strategy through cooperation between central and local governments.

### Investment Attraction Focus:

Implement innovation-driven development strategy. Encourage the concentration of premium resources and the development of high-end service industries including but not limited to modern finance, wealth management, fintech, headquarters economy, digital trade, cross-border e-commerce, and professional service. Constantly improve the functions of Shanghai international financial center and international trade center.



Several Measures to Support the Financial Innovation and Development in Lin-gang Special Area of China (Shanghai) Pilot Free Trade Zone



Several Measures to Comprehensively Promote the Financial Opening-up and Innovation in Lin-gang Special Area of China (Shanghai) Pilot Free Trade Zone



Opinions on Further Accelerating the Construction of Shanghai International Financial Center and the Integrated Development of the Yangtze River Delta

### Commercial Policies:

Several Policies to Promote Commercial Development in Lin-gang Special Area of China (Shanghai) Pilot Free Trade Zone is formulated to promote the clustering and sustainable development of commerce, attract and nurture premium commercial entities, enhance the commercial quality and capacity, create a sound commercial business environment, and build a modern city with open innovation, smart ecology, city-industry integration and livable environment in Lin-gang Special Area, according to policy documents such as the General Plan of Lin-gang Special Area of China (Shanghai) Pilot Free Trade Zone, Administrative Measures

of Lin-gang Special Area of China (Shanghai) Pilot Free Trade Zone, and Several Opinions on the Implementation of Preferential Policies to Boost High-quality Development of Lin-gang Special Area of the China (Shanghai) Pilot Free Trade Zone. Support the construction of food markets and basic commercial facilities in communities to solve the daily needs of local inhabitants and make their life easier. Support the attraction of high-quality commercial brands at various levels to upgrade the overall commercial environment in Lin-gang Special Area.

### Cultural Policies:

Several Policies to Promote the Development of Cultural Industry in Lin-gang Special Area of China (Shanghai) Pilot Free Trade Zone is formulated to expand the support to the development of cultural industry in Lin-gang Special Area, according to policy documents such as Administrative Measures of Lin-gang Special Area of China (Shanghai) Pilot Free

Trade Zone, and Several Opinions on the Implementation of Preferential Policies to Boost High-quality Development of Lin-gang Special Area of the China (Shanghai) Pilot Free Trade Zone. Support the development of cultural industries in Lin-gang Special Area, such as filmmaking, art performance, digital culture, artwork, creative

### Tourism and Sports Policies:

Several Policies to Promote the High-quality Development of Tourism and Sports Industries in Lin-gang Special Area of China (Shanghai) Pilot Free Trade Zone is formulated to promote the high-quality development of the tourism and sports industries, nurture projects with new business

models and new business types, organize high-standard and professional activities, enrich urban functions, improve the quality of life, cooperate with international participants, and build a modern city with open innovation, smart ecology, city-industry integration and livable

design, publication, and culture equipment manufacture. Promote the integrated development between art and tourism, sports, science & technology, commerce, finance, and trade. Build a cultural industrial system and market system with influence and competitiveness in international markets.

environment in Lin-gang Special Area of China (Shanghai) Pilot Free Trade Zone (hereinafter referred to as “Lin-gang Special Area”), according to policy documents such as the General Plan of Lin-gang Special Area of China (Shanghai) Pilot Free Trade Zone, Administrative Measures of



Lin-gang Special Area of China (Shanghai) Pilot Free Trade Zone, and Several Opinions on the Implementation of Preferential Policies to Boost High-quality Development of Lin-gang Special Area of the China (Shanghai) Pilot Free Trade Zone. Support companies and institutions in tourism and sport industries or companies and institutions providing related services that have their venues

of business registration, actual operation and tax account in the City-Industry Integration Zone (386 km<sup>2</sup>) of Lin-gang Special Area, as well as those major projects and brand activities related to tourism and sports industries that are approved to be included to the scope of support. Further accelerate the development of tourism and sports industries in Lin-gang Special Area. Create new

landmarks for the international metropolis. Form new models for high-quality life. Gather new resources for tourism and sports industries. Inject new impetus to leisure tourism. Improve the overall environment. Build a cluster of tourism and sports industries with vitality, openness, exquisiteness, and eco-friendliness.

- ◆ Support the attraction of tenants with high-quality and new business type
- ◆ Support the construction of supportive commercial facilities for business streets, neighborhoods, and industrial Parks.
- ◆ Support the construction of regional commercial centers.
- ◆ Support the improvement of commercial environment.
- ◆ Encourage the investment in featured and high-quality tourism and sports projects.
- ◆ Reduce the finance cost for companies. Provide subsidized loans to projects.
- ◆ Support the import of high-end foreign entertainment and fitness equipment.
- ◆ Support tourist sites to apply for national A-level scenic spots.
- ◆ Support the development of film-making industry. Support market entities to invest in film and television production bases, post-production studios, application and development of visual effect technologies, and supportive facilities to large-scale film and television activities.
- ◆ Support the development of art performance industry by encouraging the construction of performance venues and the promotion of new business models. Nurture premium productions. Create a sound industrial chain.
- ◆ Support the development of digital culture industry by facilitating the creation and promotion of animations, cartoons and games by Chinese studios, and the establishment of famous brands for local e-sport teams.
- ◆ Support the development of artwork, creativity and design, and publication industries. Support the international cultural trade and enhance financial service to art industry.

### Investment Advantages:

In 2020, Lin-gang Special Area published a series of favorable policies in commerce, culture, tourism, and sports, which played a large role in promoting the clustering and sustainable development of commerce, and

attracting and nurturing premium commercial complexes. The influx of industries and talents, the high-speed development of tourism, and the construction of a livable integrated city all provide firm support to the commer-

cial boom. At present, the main commercial resources and the basic commercial facilities in the City-Industry Integration Zone (386 km<sup>2</sup>) of Lin-gang Special Area are found in 6 areas: No. 3 Ring

Road around Dishui Lake, residential area along Shengang Avenue, university area, Luchao Port area, Nicheng Town area, and Shuyuan Town area. Commercial clusters start to take shape. Lin-gang Special Area now has 5 middle- to large-scale commercial complexes and 26 hotels. Lin-gang has organized many professional sports events, such as UIM-ABP Aquabike World Championship, OP Regatta Invitational Tournament, China International Women's Match Race,

UIM XCAT Powerboating World Championship, and other leading games. Other activities are also widely participated in Lin-gang, such as the New Year Running around Dishui Lake, Sunshine Music Festival, Dishui Lake Triathlon, and Lin-gang Ocean Festival. In 2018 and 2019, Lin-gang Special Area organized two sessions of World Laureates Forum in a roll. With innovation in its blood, Lin-gang Special Area will become a cradle for technological innovation and creative ideas,

and an exchange platform for scientists with international influence. Lin-gang Special Area will become a sub-center of Shanghai. As its development is gaining traction, more and more leading companies in China and the rest of the world are coming to this area. In the future, more commercial, cultural, and tourist projects will locate here. Lin-gang is emerging as a destination for travel and consumption.

### Investment Attraction Focus:

The downtown Lin-gang is working hard to attract modern services (including travel, conference, exhibition, culture, creativity, commerce, trade, and finance) with its high concentration of elements, city-industry integration, and demonstrative role of leading industrial development. It inherits

Shanghai's city character of openness and inclusiveness, enters gracefully onto the global stage, embraces international diversity, creates colorful life, and allows the blending of various cultures. Lin-gang Special Area integrates the cutting-edge technologies with industries, art, and life,

creating an experimental field for future technologies. Through the exchanges between the east and the west, the traditional and the futuristic, Lin-gang has demonstrated its unique charisma and characteristics, promoted cultural development, and catalyzed the prosperity of local economy.



Several Policies to Promote Commercial Development in Lin-gang Special Area of China (Shanghai) Pilot Free Trade Zone



Several Policies to Promote the Development of Cultural Industry in Lin-gang Special Area of China (Shanghai) Pilot Free Trade Zone



Several Policies to Promote the High-quality Development of Tourism and Sports Industries in Lin-gang Special Area of China (Shanghai) Pilot Free Trade Zone



# YANGSHAN FREE TRADE ZONE

*The first special comprehensive bonded area in China*

## Overview of Yangshan Free Trade Zone:

Yangshan Free Trade Zone locates in the south of Shanghai, along the East China Sea. In January 2020, the State Council approved the establishment of Yangshan Free Trade Zone (25.31 km<sup>2</sup>), which covers 3 areas (in 5 land plots) namely Luchao Port, Xiaoyangshan Island, and southern part to Pudong

International Airport. On 12 May 2020, Yangshan Free Trade Zone (Phase 1) passed the joint acceptance inspection of 8 miniseries such as the General Administration of Customs and became the only special comprehensive bonded area among 151 customs areas in China.

Yangshan Free Trade Zone “opens the first line and controls the second line”. Goods can be imported and exported freely on national border (first line) and go through quarantine and inspection inside the bonded area. Goods that are imported from or exported to outside the bonded area (second line) only need to make customs declaration on one side. No customs account book is needed inside the bonded area. Goods can be transported without customs supervision within the bonded area. The import and export in the bonded area are calculated separately. If the goods need to be transport to another customs area, it only needs to declare on one side.

## Planning of Yangshan Free Trade Zone:

Yangshan Free Trade Zone benchmarks itself against the internationally recognized and most competitive free trade zones in the world, follows the “Five Important Elements” required by President Xi, bases on the positioning of “Greater Shanghai along the coast and free trade port with both seaport and airport”, aims at building a free trade port with intentional competitiveness and influence, harmonizes its rules with free

trade zones/ports in the world and high-standard international trade and investment agreements, implements open policies and institutions that are fairly competitive in international market. It will become a world-famous area of best practices for the liberalization, facilitation, and integration of international investment, trade, services, an important functional zone to achieve the goals of “Five Important Elements” and leading

high-standard opening-up and high-quality development in China, and a main battleground for Shanghai’s initiative to become an international economic, finance, trade, shipping, and scientific innovation center.

Going forward, Yangshan will continue to enhance basic functions for bonded logistics, bonded processing and manufacturing, and bonded services, further expand functional innovations, focus on international businesses for logistics, trade, offshore finance, and R&D, and build an integrated development zone for cross-border finance. It will also construct a pilot zone for international shipping service by attracting upscale shipping factors and functions, and an innovation demonstration zone for civil aviation by develop-

ing cutting-edge and high value-added tech industries such as civil aviation manufacture. At the same time, it will also nurture key industries such as international supply chain management, international high-end manufacture and related services, and cross-border comprehensive services, and build the international LCL center, international distribution and delivery center, international order processing center, global sales and service center, cross-border digital trade center, global maintenance, repair and green remanufacture center, high-end R&D and manufacture center, international financial asset exchange center, international commodities spot trading center, and international finance lease exchange center.

*Integration of port  
and bonded area*

*Implementation of  
latest standards*

*Consistency with  
high international standards*

*Establishment of an integrated information  
management and service platform*

*Four special features of Yangshan Free Trade Zone*

## Integration of port and bonded area

Phase 1 of Yangshan has a fenced area of 14.27 km<sup>2</sup>, which includes Luchao Port (6.36 km<sup>2</sup>), Xiaoyangshan Island (7.91 km<sup>2</sup>), and 2 land plots connected by Donghai Bridge. The operation of bonded area and port is fully integrated in a closed area.

## Implementation of latest standards

Phase 1 fenced area strictly follows the standards set in “Rules on Setting the Basic and Regulatory Facilities in 2019”. Compliance conversion and upgrade for fences, roads, CCTV cameras, perimeter alarm system, check points, and buildings for offices, customs supervision, and special technologies is finished.

## Consistency with high international standards

Aiming at a first-rate smart park in the world, Yangshan adopts latest technologies, such as drones, 5G, IoT, and all-in-one poles, to enhance its smart supervision. In particular, it took reference from the inspection center in Netherlands, and overhauled its check and inspection platforms to make them integrated, self-contained, high-standard, and operational 24/7.

## Establishment of an integrated information management and service platform

The core functions of the platform include coordinated supervision, risk early warning, e-government service, and value-added service. It aims to become an electric fence on multiple dimensions, implement accurate, smart, and smooth supervision, and enhance supervision capacity through transparent data. The platform now has 9 modules for 53 functions. It has combined 1,282 items and 17,659 information sections from 67 authorities or departments. Its data are shared with 54 companies in Yangshan, 1 company outside the bonded area, and 15 banks. It can meet the demands for coordinated supervision from customs, market supervision, tax, and foreign exchanges.

## Four special features of Yangshan Free Trade Zone

### I. Highly opened-up policies and institutions

A tax regime and tax policies that are very competitive internationally is implemented, giving bonded or tax-free treatment to inbound goods to Yangshan (except from those provided separately in laws, regulations and existing policies). Domestic goods from outside Yangshan is deemed as export when they reached the bonded area and is granted export rebate. The waiving of VAT and excise tax for trade and service between companies in Yangshan is carried out. Also, companies in Yangshan have the freedom of operation to carry out businesses such as transit, container consolidation, warehousing, processing, manufacturing, trade, exhibition, research and development, remanufacturing, inspection and maintenance, distribution and delivery, etc. In addition, key companies in the core production or R&D links of areas such as integrated circuits, artificial intelligence, biomedicine, and civil aviation can apply for special customs policies such as “one assessment for several imports” for biopharmaceuticals, bonded supervision for the entire group, customs supervision of finance lease outside Yangshan, if they are registered in Lin-gang Special Area but outside Yangshan Free Trade Zone.

### II. Free and facilitated supervision model

According to the General Plan of Lin-gang Special Area, in addition to implementing all policies for the special comprehensive bonded area, Yangshan Free Trade Zone will also abolish unnecessary requirements for trade supervision, licensing, and procedures. Instead, it will adopt trade facilitation policies that are “fully open on first line, and highly liberal on second line”. For example, the import and export permit will be suspended to the largest possible extent, giving clearance to all imported

and exported goods on the national border (first line). The customs account books will not be maintained in the bonded area, and goods can be transported freely without customs supervision. Goods going into or out of the bonded area (second line), or goods to be transport to another customs area only need to make customs declaration on one side. The import and export in the bonded area are calculated separately.

### III. Special functional positioning of integrated onshore and offshore development

According to the “Five Important Elements” by President Xi and the positioning of “Greater Shanghai along the coast and free trade port with both seaport and airport”, Yangshan strives to build a free trade port with the strongest international competitiveness and influence, harmonizes its rules with free trade zones/ports in the world and high-standard international trade and investment agreements, and implements open policies that are relatively competitive in international market. It will become a world-famous area of best practices for the liberalization, facilitation, and integration of international investment, trade, services, an important functional zone to achieve the goals of “Five Important Elements” and leading high-standard opening-up and high-quality development in China, and a main battleground for Shanghai’s initiative to become an international economic, finance, trade, shipping, and scientific innovation center.

### IV. International industrial chains in special sectors

Yangshan will further open key industries that are required by national strategies, in demand on internation-

al markets, but not yet practical in other places, such as telecommunications, insurance, securities, scientific research and technological services, education, and health care, implement open policies and institutions that are fairly competitive in international markets, and gradually elevate the investment and trade liberalization and facilitation to the highest levels in the world. It will also center on improving the allocation

of global resources and factors, focus on international businesses for logistics, shipping, R&D, manufacture, offshore trade, and offshore finance, promote the clustering of industrial chains, nurture several featured industries with an output of trillions of yuan, hundred billions of yuan, or ten billions of yuan, continuously enhance the industrial capacity in the region, and beef up the regional creativity and competitiveness.





Yangshan Free Trade Zone

### Investment Advantages:

Yangshan Free Trade Zone is the only special comprehensive bonded area in China. According to the General Plan, in addition to implementing all policies for special comprehensive bonded area, Yangshan Free Trade Zone will also abolish unnecessary requirements for trade supervision, licensing, and procedures. Instead, it will adopt policies and institutions that allow more trade liberalization and facilitation. Compared to other customs areas such as ordinary bonded areas, bonded logistic parks, export processing zones, bonded port areas, comprehensive bonded areas, cross-border industrial parks, and border economic co-operative zones, Yangshan Free Trade Zone boasts following advantages:

1. Policies and institutions are more liberalized and facilitated. General Administration of Customs stipulated in the Customs Supervision Measures in Yangshan Free Trade Zone that new customs supervision measures are applied in

Yangshan. Goods can be imported and exported freely on national border (first line). Goods imported from or exported to outside Yangshan (second line) only need to make customs declaration on one side. No customs account book is needed inside the bonded area. Goods can be transported without customs supervision within the bonded area. Compared to measures applied in comprehensive bonded areas (bonded port areas), which require registration and quarantine at first line, customs declaration at second line, maintenance of customs account book, and declaration on both side when transporting inside the bonded area, trade in Yangshan is significantly liberalized and facilitated.

2. The effect of guiding industrial functions is evident. Yangshan Free Trade Zone is adjacent to two major ports: Yangshan Deep Water Port and Pudong International Airport. It has a perfect location and rich regional functions. Clustering effect in trade, logistics, shipping service, and

aircraft manufacture has come into play in the original Yangshan Bonded Port Area and COMAC Pudong Base. In the future, Yangshan Free Trade Zone will forcefully develop international supply chain management, international high-end manufacture and related service, and cross-border comprehensive service, and build the integrated development zone for cross-border comprehensive service, the pilot zone for international shipping service, and the innovation demonstration zone for civil aviation. Its industrial functions will be unparalleled among its peers in China, providing much guidance to industrial development. Industrial collaboration between Yangshan and surrounding areas offers many advantages. In order to support and

promote the high-quality development of key industries and companies with international competitiveness in Lin-gang Special Area, the General Administration of Customs stipulated that key companies in the core production or R&D links of areas such as integrated circuits, artificial intelligence, biomedicine, and civil aviation can apply for special customs policies such as e-supervision, new methods of inspection and quarantine, streamlined management of customs account book, and bonded supervision for the entire group, if they are registered in Lin-gang Special Area but outside Yangshan Free Trade Zone, so that the favorable policies and industrial functions in Yangshan Free Trade Zone can benefit other parts of Lin-gang as well.



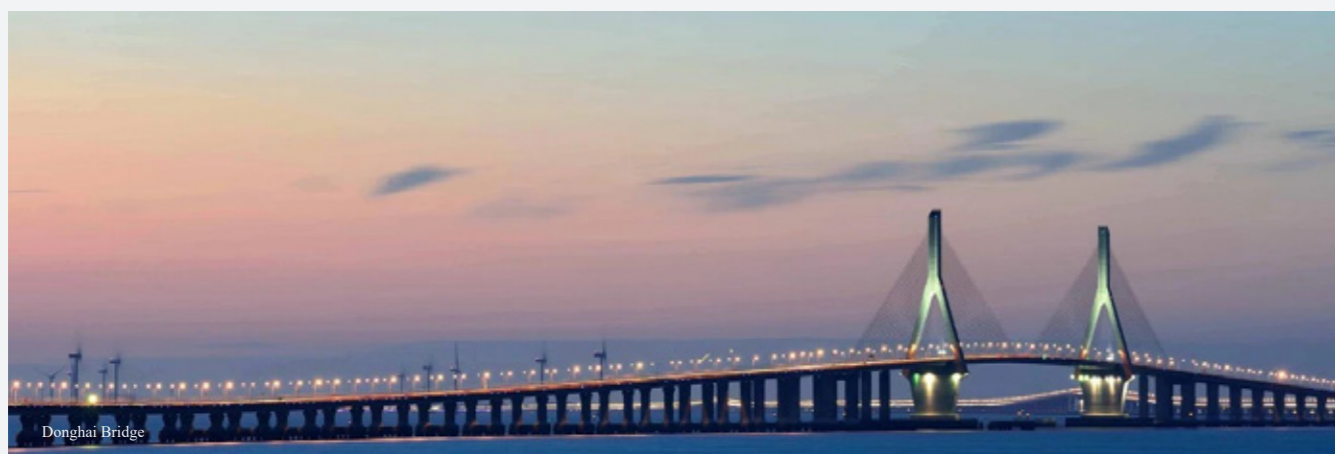
Demonstration Zone for Cross-border E-commerce



Asia-Pacific Distribution Center



Yangshan Port Area



Donghai Bridge

### Industries in Yangshan Free Trade Zone:

Yangshan Free Trade Zone is the only “comprehensive pilot zone for international shipping” in China approved by the State Council. As an integral part of Lin-gang Special Area, Yangshan Free Trade Zone has the special geographic advantage of the Yangshan Deep Water Port and more liberalized and facilitated trade policies and institutions. A featured and

competitive industrial cluster is already established, which includes Asia-Pacific distribution, automobile and auto parts, food and cosmetics, commodities, cross-border e-commerce, bonded maintenance and repair, bonded R&D, bonded ship supplies, offshore transit trade, and international transit and LCL.

### Featured industries:

#### Asia-Pacific Distribution Center

Yangshan Free Trade Zone actively implements a series of pilot programs for trade facilitation, such as free import and export on first line, single-side declaration on second line, no need for customs account book, and transportation without customs supervision, which help to unleash the potential of industrial clusters, and enhance its position as a hub on the Asian supply chain. At present, key tenants of the AP Distribution Center include Stanley Black & Decker, Dannon, Lego, Ikea, and Carrefour.

#### Automobile and Auto Parts

Yangshan Free Trade Zone has more than 20 distribution centers of automobile or auto part companies on the Global Fortune 500 list. At the same time, it is also the Yangtze River Delta Demonstrative Platform for Imported Auto Parts, and Credit System Platform for Auto Part Companies in China (Shanghai) Pilot Free Trade Zone. Related tenants in Yangshan include BMW, Volkswagen, Volvo, Chrysler, Ford, Fiat, Valeo, etc.

#### Food and Cosmetics

Yangshan Free Trade Zone has a large supply of cold chain facilities, including refrigeration storage of more than 130,000 m<sup>2</sup>, labs for imported food testing, and specialized warehouses for imported food and cosmetics. Imported food at Yangshan Port accounts for around 90% of Shanghai Ports.

#### Testing and Repair

Yangshan Free Trade Zone is an important hub for bonded maintenance and repair parts of international ship. Tenants in the industrial park include MAN Group, CSSC Service (CSSC Marine Service Co. Ltd), SCIC (China Shipbuilding Industry Company Limited), etc. It has also established a public supply platform for bonded ship parts, as well as bonded warehouses, testing and repair facilities and

distribution centers for ship parts.

#### Cross-border E-commerce

Yangshan Free Trade Zone is a Shanghai Demonstration Zone for Cross-border E-commerce. It was awarded “the best demonstration zone for cross-border e-commerce” by Shanghai Cross-border E-commerce Association. “Yangshan Stocking Model for Cross-border E-commerce” made breakthroughs in many policies, and its first-mover advantage brings a highly concentrated development of the business. JD Worldwide, Dannon Milk Powder, SIPG Mall, Amazon, and many other projects are registered in the port area, making Yangshan Free Trade Zone an important industrial base for bonded import of cross-border e-commerce in Shanghai.

#### Commodities Trade

There are more than 310 commodity metal companies in Yangshan, with a combined registered capital of more than 10 billion yuan, trade volume of more than 200 billion yuan per year, and business covering the entire industrial chain of international trade. Yangshan has built specialized bonded warehouses for commodities (250,000 m<sup>2</sup>) and other facilities for logistics, distribution and storage. It also has featured functions such as bonded delivery of futures, Yangshan Copper Premium, and public announcement of shipping bills.

#### Bonded Research and Development

The bonded R&D platforms in Yangshan Free Trade Zone enjoys the advantages of Lin-gang Special Area such as favorable policies for high-end manufacture, the unique geographic location of Yangshan Deep Water Port, a high concentration of service providers for bonded R&D which has “both ends staying overseas”. They help to boost the hi-tech industries in Lin-gang Special Area.



Several Opinions on Promoting the Opening-up and Innovation-driven Development in Yangshan Free Trade Zone



People's Republic of China's Customs Supervision Measures in Yangshan Free Trade Zone, issued by General Administration of Customs





## THREE FEATURED INDUSTRIAL PARKS

Blue Bay World | Oriental Semiconductor Hub | Big Aircraft Park



### Blue Bay World

Blue Bay World, located at the west gate of Lin-gang Special Area of China (Shanghai) Pilot Free Trade Zone, is a new generation industrial park co-developed by Lin-gang Group, Bright Food Group, and Fengxian District Government. It has an initial planned area of 17.04 km<sup>2</sup>, which later expanded to 45 km<sup>2</sup>.

As an integral part of Lin-gang Special Area, Blue Bay World is an important place for the development of high-end and frontier industries and the pilot area for biomedicine industry. It has nurtured industrial clusters for life science and technology, new energy and smart connected vehicle, and high-end intelligent equipment. The park is listed on the Shanghai Industrial Map for New Energy and Smart Vehicle, the Three-year Action Plan for the High-quality Development of Biomedicine Industry in Shanghai (2018-2020) and selected as one of the 26 featured industrial parks in Shanghai.

#### Industrial Features:

On a planned area of 4.5 km<sup>2</sup>, Blue Bay World spares no effort to build a cluster for international life science and technology industries that has combined functions of R&D, production, testing and demonstration. It focuses on the near-to-middle term commercialization projects of biomedicine, and has planned high-end international health care services, bonded R&D of biomedicine, and international hospitals for clinical research in its area.

#### Industrial Ecosystem:

It has attracted many leading bio-tech companies, such as Tellgen, TopAlliance, Wuxi AppTech, Celgen Biopharma, OBiO, Dragon Sail Pharmaceutical, and Zhenge Biotech, with a combined land use of nearly 500 mu, building area of 400,000 m<sup>2</sup>, total investment of nearly 8 billion yuan,

and an estimated output of 26 billion yuan. In addition, Blue Bay World has attracted more than 70 industrial projects from a dozen of countries such as the US, Germany, France, Japan, Netherlands, and Brazil, and has nurtured a life science and technology industry with a solid foundation on biomedicine.

#### Core Policies:

"1+4" policies of Lin-gang Special Area, the Special Development Fund for Life Science and Technology Industry.





## Oriental Semiconductor Hub

Lin-gang Special Area is actively building a special economic functional zone with stronger international influence and competitiveness. It will establish frontier industrial clusters that can make breakthroughs in core technologies and construct a first-rate comprehensive industrial base for semiconductor in China. The semiconductor industry in Lin-gang Special Area benchmarks against the highest standards and best practices in the world, strengthens “four major functions”, builds hardcore clusters of integrated circuits, and guides the high-quality development of the industry.

### Industrial Features:

SMIT announced its Shanghai EDA R&D Center in Lin-gang toward the end of 2019. The project will forcefully promote the research and development of Chinese EDA (electronic design automation) tools. Leadrive and Lin-gang Group jointly established Shanghai Lin-gang Power Electronics Research Institute, with an aim to become a world-leading and top Chinese research and commercialization institute for high-end power and electronic technology and equipment. Huada Semiconductor is setting up a national-level carborundum research center with its own production lines. The construction of Compound Semiconductor Innovative Research Platform of Shanghai Industrial  $\mu$ Technology Research Institute (SITRI) is forging ahead, which will become a “super incubator” for 5G millimeter wave application, post-5G, and terahertz technology of compound semiconductor industry.

### Industrial Ecosystem:

There are more than 40 integrated circuit companies registered in Lin-gang area, covering the entire industrial chain from equipment, materials, to chip design, fabrication, packaging, and testing. Large-scale projects are rolling out smoothly. For example, the monthly production of Zingsemi has exceeded 70,000 units, meaning that China is no longer totally reliant on the import of large wafers. GTA Semiconductor, affiliated to Huada Semiconductor, has started the equipment installation of its special processing lines, the production of which will begin toward the end of 2020. The advanced ion implanter of Kingstone Semiconductor is estimated to start production at the end of this year. Lin-gang Research and Fabrication Center of ACM Research is under construction. In the area of chip design, in particular AI, new storage, and RF chips, a number of leading companies in China are established in Lin-gang Special Area, such as Cambricon, Horizon Robotics, iFLYTEK, and Citrus Technology. The research and innovation network for equipment materials, 3rd generation semiconductor materials and other key areas is formed, which can develop or produce at least 5 types of internationally competitive products, including various chips, techniques, equipment, and materials. More than 50,000 professionals with masters’ degree or above are working in the integrated circuit industry.

### Core Policies:

In October 2019, Lin-gang Special Area published a 16-point policy for the promotion of industrial development and a 40-point supportive measure for four major industries (collectively called “1+4” industrial policies), which provide fiscal subsidies to the project construction, equipment purchase, and R&D investment of integrated circuit companies, and lend comprehensive support to EDA software procurement, IP purchase, testing and validation, promotion and application, taping out, and industrial electricity price.



### Big Aircraft Park

The Big Aircraft Park is located in the southern part of Pudong International Airport, inside the Lin-gang Special Area of China (Shanghai) Pilot Free Trade Zone. The industrial park has a total land area of 24.7 km<sup>2</sup>, of which 7.86 km<sup>2</sup> is in the special comprehensive bonded area.

COMAC, Shanghai Airport Authority, and Lin-gang Group are the troika behind the initiative. They pool their resources and build this big aircraft park at the southern part of Pudong International Airport, with a goal to nurture a cluster for world-class aviation industry, not only for the park, but also for the entire city.

#### Industrial Features:

The positioning of Big Aircraft Park is to develop “big aircrafts in a transport hub, a cradle of innovation, and a free port”. It enjoys the advantages of Lin-gang Special Area, the special comprehensive bonded area, the “crown jewel” industry of big aircraft, and an international air hub that connects the entire world. The park is building a platform for the development, innovation, production, influence, and attraction of the aviation industry, gathering high-end businesses in aviation R&D, manufacture, operation, maintenance, and services, helping tenant companies to serve national strategies, realize upgrade and transformation, increase brand value, and expand the first-mover advantage in the markets, growing the cluster of Chinese suppliers for commercial aircrafts, and ensuring the safety of aviation industrial chain.

#### Industrial Ecosystem:

Several Policies to Promote the Clustering Development of Aerospace and Aeronautic Industry in Lin-gang Special Area of China (Shanghai) Pilot Free Trade Zone, People’s Republic of China’s Customs Supervision Measures in Yangshan Free Trade Zone. Big Aircraft Park is a promoter of industrial development and a constructor of urban renovation. By

aligning innovation chains side by side with industrial chains, it promotes the integration and collaboration of innovation chains and industrial chains, embraces the world and the future, constructs a first-rate aviation park with industrial clusters, free trade, smart capacities, and city-industry integration, and helps to make the Chinese dream of aviation come true in an earlier date.



# OVERVIEW OF KEY INDUSTRIAL PARKS



## INTERNATIONAL INNOVATION AND COOPERATION ZONE

International Innovation and Cooperation Zone, developed by Lin-gang Sci-tech City affiliated to Lin-gang Group, has a planned area of 10.3 km<sup>2</sup>. It comprises the Sci-tech City Community, Top Scientist Community, Sci-tech Headquarters Bay, and Future City. The Sci-tech City Community, covering 3.2 km<sup>2</sup>, aims to become a cradle of international innovation and an incubator of industrial projects. The Top Scientist Community, covering 2.5 km<sup>2</sup>, focuses on top scientists around the world, facilitates cooperation among the research institutions, academia, and industry, and encourages the commercialization, marketization and internationalization of the research results in basic science. The Sci-tech Headquarters Bay, covering 1.1 km<sup>2</sup>, works to build a gravity center for high-tech headquarters and leading companies. The Future City, covering 1 km<sup>2</sup>, provides much space for the development of unmanned systems in land, sea and air.

The International Innovation and Cooperation Zone has 8 main functional platforms, namely the Functional Platform for Smart Manufacture R&D and Commercialization, the Functional Platform for Industrial Internet R&D and Commercialization, Shanghai Lin-gang Artificial Intelligence Base, Shanghai Zhu Guangya Strategic Technology Institute, Undersea Scientific Observation Center of Tongji University, the Lin-gang Comprehensive Demonstration Zone of Unmanned Systems in Land, Sea and Air, Smart SkyNet Innovation Project of Tsinghua University, and Fudan-Lin-gang Industrial Innovation Platform.

Also, six industries including artificial intelligence, industrial Internet, integrated circuits, smart connected vehicles, civil aviation, and smart manufacture are developing very well in the Zone.

**Tenant Companies:** Cambricon, Horizon Robotics, TuSimple, Breton, Industrial Internet Innovation Center, Oxai Aircraft.



## LIN-GANG MARINE SCIENCE PARK

Located in the start-up area of Lin-gang Special Area, China (Shanghai) Pilot Free Trade Zone, the Marine Science Park was inaugurated in 2007 to build a core functional zone for the strategic development of marine economy and marine industry in Shanghai. It aims to become a "Marine Silicon Valley" with high international influence and competitiveness, as well as a first-rate "collaborative development zone for marine science and technology, a cluster for marine industry, a demonstrative zone for marine science innovation, a commercialization center for marine technology, and a cradle for talents in marine science and technology" in the world. The Park focuses on frontier areas of marine science and technology, such as smart ocean, offshore equipment, marine resource exploitation, and marine biomedicine, and it also covers other emerging sectors such as artificial intelligence and intelligent manufacture. It operates properties such as Harbour City High Live Fun Science Park, Harbour City High Live Fun Equipment Park, and Lin-gang Marine Science Plaza, offering functions for R&D, office, production, manufacture, and testing. A modern community that combines science, technology, talent, information, finance, environment, and ecology is under development. It is now striving to build a new center of attraction center for the innovative, clustering, and integrated industrial development of Lin-gang Special Area.

**Tenant Companies:** Rainbowfish Ocean Technology, Shanghai Shockstorm Ocean Engineering, Hengtong Subsea Technologies, Shanghai Hong Hua Oil and Gas Equipment, Autosubsea Vehicles.



## LIN-GANG SCIENCE AND INNOVATION CENTER PARK

Shanghai Lin-gang Science and Innovation Center Park boasts complete infrastructure and sound entrepreneurial environment in its 100,000-m<sup>2</sup> land area. It has attracted a number of domestic and foreign companies in intelligent manufacture and integrated circuits. A mature and professional incubation chain of 3 tiers (pre-incubation - professional incubation - incubation acceleration) provides innovative and dedicated services to tenant companies of different development stages, accelerating the growth of these companies.

In 2020, Lin-gang Science and Innovation Center Park was upgraded to a global cross-border technology trade center and an offshore incubation base. The goal is to become a world-class cross-border technology trading hub that provides technology trade, R&D, company, finance, and talent services. It aims to become a hub platform with functions of technology trade, IP operation and protection, technology financing, training and exchanges, and pilot scale R&D, by combining international resources such as International Technology Transfer Network (ITTN), International Securities Exchange, the international technology transfer organization, famous universities and research institutes, and international capital, and attracting domestic entities such as the Yangtze River Delta Collaborative Innovation Network, functional platforms for science and technology in Shanghai, famous scientific and research institutes in China, domestic service providers of science and technology, and local fin-tech institutions.

**Tenant Companies:** JieJie Microelectronics (Shanghai), IntChains, Shanghai Power Device, Innoteck, Shanghai Napu Measurement and Control Technology, Shanghai Linxi Smart Technology, Shanghai Lingting Automation Technology.



## SHANGHAI LIN-GANG SOFTWARE PARK

Shanghai Lin-gang Software Park is located at the downtown area of Lin-gang Special Area, China (Shanghai) Pilot Free Trade Zone. When it was established in 2013, the park, with a planned area of no less than 500,000 m<sup>2</sup>, was identified by Shanghai Municipal Commission of Economy and Informationization as a strategic zone for the software and information service industry in Shanghai. Shanghai Lin-gang Software Park (Harbour City Plaza base) is inside a city complex -- Harbour City Plaza (78 Yunjuan Road), which has functions of office, retail, hotel, conference, exhibition, culture, and residence. The park is by the side of Dishui Lake, offering beautiful scenery, convenient transport, and various commercial facilities to tenants and visitors.

Since its opening in 2013, the park has been growing amazingly fast in the past 7 years, attracting a number of anchor tenants, and forming an initial industrial layout. It plans to build on existing industries and follow the development strategy of Lin-gang Special Area to foster industrial clusters that center on integrated circuits and are supplemented by software and information service, 5G communications, and artificial intelligence. It will also create a "1+X" software innovation community that has a high density of industries, talents and innovation factors by following closely the development strategies of Lin-gang Special Area to be a special economic functional zone with stronger international influence and competitiveness and a modern city with open innovation, smart ecology, city-industry integration, and livable environment.

**Tenant Companies:** Shanghai Ncatest Technologies, Shanghai Shiningic Electronics Technologies, Shanghai Sincere Technology, DS Information Technology of China Information and Communication Technology Group, SSCT, Zyllion Data, Shanghai Natlinear Integrated Circuit, Shanghai Dream Software Technology, Wedu Semiconductor, Zhongjing RFID, Enovell.





## LIN-GANG INDUSTRIAL AREA

Lin-gang Industrial Area has a total land area of 37.64 km<sup>2</sup>, bounded by Nanlu Highway in the east, Dadi Road in the south, Nanfengjie River in the west and Nicheng Road in the north. It is rare in the world for such a port to connect inland of China and the rest of world by combining different transport models of air, sea, rail, expressway, and river. After more than a decade of development, Lin-gang Industrial Area has become a national demonstrative base for equipment manufacture. It is now picking up the pace to be a main area in a scientific and technological innovation center with global influence located in the start-up area of Lin-gang Special Area, China (Shanghai) Pilot Free Trade Zone. Lin-gang Industrial Area has been always following national strategies, showcasing Shanghai's advantages, and demonstrating international competitiveness. It is one of the industrial parks in China with the highest density of high-end equipment industry, which has six industrial manufacture bases (new energy equipment, key ship parts, ocean engineering, automobile and auto parts, large-scale logistics and engineering machinery, and equipment and key parts for civil aviation) and emerging industries (aerodynamic for civil aviation, integrated circuits and specialized devices, and remanufacture).

### Tenant Companies:

**Integrated circuits:** GTA Semiconductor, Zingsemi, ACM Research, Galaxycore, Ideal Energy Sunflower, North Ocean Photonics;  
**New energy vehicles:** SAIC, Tesla;  
**New energy equipment:** Shanghai Electric;  
**Offshore engineering equipment:** CSSC-MES, CSSC Wartsila, Waigaoqiao Shipbuilding & Offshore;  
**Aerospace and aeronautics:** AECC Commercial Aircraft Engine, Shangfei Plane Equipment Manufacturing;  
**Green remanufacture:** Caterpillar, Mercedes-Benz Parts Remanufacturing of Daimler Group.

## LIN-GANG PARK OF MINGHANG DEVELOPMENT ZONE

Minghang Development Zone is one of the 14 earliest national-level development zones in Shanghai. In 2006, Minghang Development Zone expanded to a 13.3-km<sup>2</sup> area in Lin-gang with the approval from the State Council. After more than a decade of development, Lin-gang Park of Minghang Development Zone has formed a cluster of high-end equipment manufacture industry led by ABB Group, Sulzer Group, Saint-Gobain, and YKK.

Against the backdrop of the science and innovation center with global influence in Shanghai and the free trade zone in Lin-gang Special Area, Lin-gang Park of Minghang Development Zone is working hard to nurture new clusters of smart and high-end equipment, integrated circuits, and additive manufacturing, and push its manufacturing sector to become more intelligent, upscale, and service-oriented.

After the announcement of Lin-gang Special Area, Lin-gang Park of Minghang Development Zone prepared for the new changes and actively attracted high-end resources and factors. It has built with global vision a premium industrial park for IC and smart manufacturing -- Zhixin Valley, as part of its standard workshops (phase 3). The project is located at the start-up area of Lin-gang Special Area, with a land area of 185 mu and surface area of 130,000 m<sup>2</sup>. The design of the Valley is human-centered. It plans to build single-story workshops, multi-story workshops, and multi-story pilot scale workshops, surrounded by commercial facilities that meet the various demands for R&D, offices, pilot-scale test, and production.

**Tenant Companies:** ABB Group, Sulzer Group, Saint-Gobain, YKK.



## JINQIAO LIN-GANG COMPREHENSIVE AREA

Jinqiao Lin-gang Comprehensive Area is the northern gateway to Lin-gang Special Area, which has a planned area of 42 km<sup>2</sup>. It is building an industrial cluster for light manufacture, high-tech R&D, and high value-added industries. The focus is on 6 major industries: aerospace and aeronautics, next generation information technology, smart manufacture, integrated circuit, scientific and technological innovation service, and training and education.

It takes only 15 minutes by car to go to Pudong International Airport and Shanghai East Railway Station (under construction). The area is adjacent to an expressway (Lianggang Avenue) in the west. Two metro lines (Metro Line 16 and Free Trade Zone Line) pass through the area. Jinqiao Group champions the idea of city-industry integration and business-friendly living environment. In 2012, it started the land development, project construction and investment attraction of the northern part (6.78 km<sup>2</sup>) of the comprehensive area. In 2019, the group built the Jinqiao Lin-gang industrial complex, which is a comprehensive demonstrative park for smart manufacture industry. The complex has functions of standard workshops, pilot scale R&D buildings, talent apartments, commercial facilities, offices, and exhibition center. Its total surface area is 400,000 m<sup>2</sup>, planned in 5 phases. The property started to put into service since 2019 and has attracted a number of high-end companies in smart manufacture.

**Tenant Companies:** Shanghai Siasun Robot & Automation, Shanghai Engineering Center for Microsatellites (SECM), China Mobile Group Shanghai, Lin-gang Kingstone Semiconductor, Shanghai Microsat Information Technology, Shanghai Pai Satellite.

## ZHANGJIANG SCIENCE AND TECHNOLOGY PORT

Located at the northern end of the start-up area of Lin-gang Special Area, Zhangjiang Science and Technology Port (planned area of 4 km<sup>2</sup>), developed and operated by Zhangjiang Group, reaches Shanghai Binhai Forest Park in the north, and Shanghai Flower Port in the south. It is only 15-minutes' drive from Pudong International Airport and 2 km away from the Lin-gang Avenue Station of Metro Line 16. With the aims to build a "future city", it combines the geographic value of Lin-gang Special Area and the brand of Zhangjiang Science City, also developed by Zhangjiang Group, to realize the co-development of different industries, synergy among various projects, and extended services.

The first phase of 180,000 m<sup>2</sup> is dedicated to advanced manufacturing. The supply of space will mainly be high-quality and mix-used buildings for workshops of advanced manufacture and pilot-scale test. It targets industries such as intelligent manufacturing, integrated circuits, 5G, aerospace and aeronautics, and next generation information technology. A number of new ICT and key equipment projects are operational in the Port. They help to develop the industrial layout of Lin-gang Special Area and set up a new benchmark for global smart and high-tech parks.

**Tenant Companies:** Enflame Tech, BES Technic, ASR Microelectronics, Gona Semiconductor, Supermind Smart Technology, Irisian Photoelectric, Kingo Bots, Jiyi Data Technology.



## LIN-GANG NEW OVERSEAS CHINESE EMERGING INDUSTRIAL PARK

Situated in the start-up area of Lin-gang Special Area, the Industrial Park is one of the first generic R&D parks opened since the inauguration of Lin-gang Special Area. As the first project launched in the innovation and entrepreneurial belt in Lin-gang, it has a planned area of 127 mu. Co-developed by Shanghai Lin-gang Economic Development (Group) Co., Ltd. and Shanghai Federation of Returned Overseas Chinese, it pools the resources of both parties to build an international, cutting-edge, industrial, and high-capacity high tech park.

Lin-gang New Overseas Chinese Emerging Industrial Park follows the industrial layout of Lin-gang Special Area, and focuses on premium customers in areas such as integrated circuits, artificial intelligence, biomedicine, aerospace and aeronautics, new material and new energy, health care and related service, and smart manufacture. As it is close to talent apartments that are "rent before sold", the Park offers one-stop service to daily life and businesses and provides policy support to company registration and industrial development. It forcefully pushes forward the industrial transformation and upgrade in Lin-gang, sticks to the overall construction of Shanghai Scientific and Technological Innovation Center and the overarching blue print of Lin-gang Special Area, and strives to become a cluster for the commercialization of scientific and technological innovation.

**Tenant Companies:** Lin-gang Hongbo SolarPark, Qihui Enterprise Services, Zhongman Petroleum and Natural Gas Group (ZPEC), Shanghai Licheno New Material Technology, Tanggang Tianhong Network Technology.



## MODERN SERVICE OPEN ZONE

Modern Service Open Zone is located at the downtown area of Lin-gang, Shanghai. As an important part of Lin-gang Special Area of China (Shanghai) Pilot Free Trade Zone, the Open Zone benchmarks itself against the most competitive free trade zones in the world, such as those in Hong Kong, Tokyo Bay, and Singapore Marina Bay. It fully taps into the resources and open-up advantages of Shanghai and keeps improving the industrial system and development space based on its own functional positioning. It regards finance as its core industry, comprehensively develops new business types of modern services, actively pilots new policies and measures for financial innovation, expands the scope of cross-border finance, promotes offshore business, enhances headquarters economy, encourages new international trade, and builds a cluster for modern services.

The Modern Service Open Zone has a planned area of 19.67 km<sup>2</sup> and construction area of 20 million m<sup>2</sup>, among which 9.15 million m<sup>2</sup> is for residential area, 7.8 million m<sup>2</sup> for commerce and offices. According to the planning, it will have a resident population of about 171,000 people and create around 300,000 jobs. Based on the construction requirement of "overall coordination, regional collaboration, livable environment, and top performance", the Modern Service Open Zone will have a spatial layout of "one island and 5 zones", namely Culture and Art Island, Financial Innovation Zone, Central Business District, International Trade Community, International IT Industrial Cluster, and Supportive Service Zone.

**Tenant Companies:** Industrial and Commercial Bank of China, Agricultural Bank of China, Bank of Communications, Standard Chartered Bank, HSBC, Shanghai Commercial Paper Exchange, China Pacific Insurance.



## LIN-GANG CENTER OF LUJIAZUI PLAZA

Located at the downtown of Lin-gang Special Area and the first ring around Dishui Lake, the Lin-gang Center of Lujiazui Plaza is adjacent to the largest observatory in the world, Shanghai Astronomy Museum, and Mirror of the Sky Central Park. It is a large-scale city complex (500,000 m<sup>2</sup>) for grade-A offices, international conventions, star hotels, commerce, cultural activities, and residence. As a truly one-stop business and life center, it offers inhabitants of Lin-gang a premium business environment, a relaxing shopping experience, and a healthy lifestyle.

Lin-gang Center of Lujiazui Plaza is a pioneer of the modern service sector in Lin-gang Special Area. It provides guidance to emerging sectors such as finance, cross-border commerce, and Internet economy, and actively serves functions such as offshore finance, shipping finance, and trade finance in accordance with Lin-gang's positioning to become "a free trade zone with high international standards" and "a special economic functional zone with higher influence and competitiveness in international markets." Lujiazui Group tapped into its experience in building Lujiazui Financial City and founded a "Financial Free Port" with the highest quality in the shortest possible time. At the same time, the financial opening-up fuels the construction of the cross-border trade platform, making it an important window and portal for China to integrate into the diversified development of the world economy.

**Tenant Companies:** China Baoye Construction, Bank of Shanghai, Agricultural Bank of China, Industrial Bank, Bank of Communications.



## LIN-GANG CITY INVESTMENT TOWER

Lin-gang City Investment Tower is at the prime location of the downtown of Lin-gang Special Area, in the vicinity of the regional administrative center and China Maritime Museum. It is the only smart 5A grade-A tower (with a total surface area of 26,000 m<sup>2</sup>) for office, commerce, and retail by the riverside of Dishui Lake. It is convenient to get to the tower, as it is connected to A2 and A30 express highways that lead directly to downtown Shanghai, Pudong International Airport, and Yangshan Deep Water Port. In addition, nearby routes such as S2, Lianggang Express Line, Metro Line 16 shorten the distance between Lin-gang Special Area and downtown Shanghai.

The Tower, developed by Shanghai Lin-gang New City Investment & Construction Co., Ltd, is a dedicated space for construction and financial service companies. It blends well with the surrounding supportive facilities and encourages the concentration of modern services. The building, equipped with the latest technologies, such as the network-based and open-platform wireless access and an advanced 5A automation system, can meet the demands of intelligent office and retail. It mainly attracts tenants in trade, modern service, and high-tech sectors.

**Tenant Companies:** Bank of Communications, Industrial and Commercial Bank of China, SPD Bank, China Minsheng Banking Corp, China Securities Capital Market Legal Service Center, Kaiyuan Securities, Shanghai Construction Design Research Institute, Shanghai Research Institute of Building Sciences, Shanghai Construction Group, China Construction Second Engineering Bureau.





## LIN-GANG FINANCIAL TOWER

Lin-gang Financial Tower is a landmark located at the intersection of No.1 West Huanhu Road and Shengang Avenue, by the riverside of Dishui Lake. Designed by Arte Charpentier, a famous French architecture firm, it has a total surface area of 65,000 m<sup>2</sup>, among which 47,000 m<sup>2</sup> above ground (15 floors) and 18,000 m<sup>2</sup> under the ground.

The Tower, developed by Shanghai Lin-gang New City Investment & Construction Co., Ltd, is a modern, smart, and comprehensive office building for commerce, finance, culture, and leisure at the CBD of Lin-gang. It is recognized by the Lin-gang Special Area Administration of China (Shanghai) Pilot Free Trade Zone as a key building in the region. It mainly attracts companies in science & technology, financial investment, and headquarters economy. The entire structure will be covered by 5G network, providing highly efficient office environment to all tenant companies. The Tower is surrounded by a premium business environment. When combined with the advantages of the special economic functional zone, it becomes a new type of office building with a strong brand for openness, innovation, and free flow of resources.

**Tenant Companies:** Industrial Securities, Bank of Ningbo, China Guangfa Bank, China Construction Industrial & Energy Engineering Group, Shanghai Municipal Engineering Design Institute, Lin-gang International Art Park, Dayin Bookstore, Starbucks, Ftabest, and D'Lake.

## HARBOUR CITY PLAZA

Harbour City Plaza is invested, constructed, and operated by Shanghai Harbour City Development (Group) Co., Ltd. Its total land area is 14.8 acres, and its surface area is 558,000 m<sup>2</sup>, of which 371,000 m<sup>2</sup> is above ground and 188,000 m<sup>2</sup> under the ground. It is the first wholly developed block among the 16 blocks in the Belt 1 of Dishui Lake.

The construction of Harbour City Plaza is divided into four phases. As a key public facility in downtown Lin-gang, it is an urban "public parlor" and a self-sustainable landmark. The city complex for modern services is comprised of business and office buildings, as well as other structures for commerce, residence, culture, and hotel.

The phase 1 of the project (275,000 m<sup>2</sup>) is completed in April 2020, which mainly attracts businesses in information technology, culture and education, architecture and construction, financial services, health care, and exhibition and sales.

The phase 2 (91,000 m<sup>2</sup>) is for Lin-gang International Apartments. Going forward, it will respond to the various housing demands of high-caliber talents from home and abroad and bring the mature and advanced experience of international talent apartment to Lin-gang Special Area. Global talents can expect to find high-end apartments in Lin-gang Special Area when the project is delivered at the end of 2020.

**Tenant Companies:** China Construction Eighth Engineering Division, China Merchants Bank, Shanghai Dongchang Automobile Management.



## YILIU TOWER

Yiliu Tower (888 No.2 West Huanhu Road, Pudong New Area, Shanghai) has a total surface area of 26,900 m<sup>2</sup>, of which 16,600 m<sup>2</sup> is above ground and 10,300 m<sup>2</sup> under the ground. It has a main building of 10 stories and a underground parking of 2 stories, offering 122 parking lots and 400-m<sup>2</sup> parking space for non-motor vehicles. The Tower is located at Belt 1 of downtown Lin-gang, which is about 1 km to Dishui Lake Station of Metro Line 16, 600 m to Lin-gang Administrative Service Center, and 50 m to the nearest bus stop. High-end talent apartments, star hotels, libraries, restaurants, and other facilities can be easily found in nearby places. It mainly serves key companies and service providers that are in line with the industrial development direction of Lin-gang Special Area, such as those in integrated circuits, artificial intelligence, biomedicine, and aerospace and aeronautics.

Yiliu Tower is quite different from other parks because it is a comprehensive service platform that also plays an administrative function. For example, it is selected as the venue for virtual business registration in Lin-gang Special Area. It is also the only building in Lin-gang that generates an annual tax contribution of more than 100 million yuan for many years. As the venue for centralized business registration in Lin-gang Special Area, it is a comprehensive service building with functions for commercial and industrial registration, tax service, legal service, and agency bookkeeping business.

**Tenant Companies:** Shanghai Tsingshen Technology, The First Company of China Eighth Engineering Bureau, Lin-gang Everbene.

## LIN-GANG MODERN LOGISTICS PARK

Lin-gang Modern Logistics Park enjoys an advantageous location as it is backed by Lin-gang Industrial Area, which is the main battleground for the science and innovation center and the national intelligent manufacturing center. Against the backdrop of integrated development of Lin-gang, the logistics park fully utilizes its competitive edge in transport, regional planning, and favorable policies to develop production logistics and home logistics and promote the integration of logistics with trade and finance. It plays a key role in accelerating the development of the logistics industry in Lin-gang and expanding the economic development space for Shanghai International Shipping Center. Lin-gang Modern Logistics Park sits at the Yangtze Estuary and Hangzhou Bay. Backed by the advantages of Yangshan Deep Water Port, its logistics capacity is in high demand because the existing free trade zone, export processing zone, financial and trade zone, and hi-tech parks in Shanghai have huge amounts of companies that need to transport, store or process their products from trading, processing or warehousing. The park serves the economic development of Shanghai with its professional and market-based logistics network that follows the law of market economy, practices international rules and norms, and offers smooth, reliable, economic, and satisfactory services. Thanks to its advantages in geographic location and enabling policies, Lin-gang Modern Logistics Park has already attracted numerous logistics companies and enjoys a huge market demand and potential.

**Tenant Companies:** Caterpillar Logistics (Shanghai), Ocean East International Logistics, EIR, COSCO Shipping Logistics International Container Storage.



### LIN-GANG NANHUI NEW CITY PARK

Lin-gang Nanhui New City Park (with planned area of 1 km<sup>2</sup>) is located in the Lin-gang Heavy Equipment Industrial Park. It is bounded by Nanlu Highway in the east, Renmin Pool in the south, Tianjiao Road in the west, and Lianggang Avenue in the north. According to the 12th Five-Year Plan of Lin-gang Industrial Area, the park is a functional zone for the producer service of modern equipment in Lin-gang, and an service center for the production, R&D, design, and technological innovation of modern equipment and marine engineering. It focuses on manufacturers, research, and design firms in automobile and shipbuilding. The supportive functions of the park keep improving. After more than 10 years of development, the park has already shown economy of scale. Tenant companies are operating smoothly. Its tenants are mainly in four categories, namely marine and shipping (marine heat exchanger of Korea Donghwa Entec), heavy equipment manufacturing (Finland Konecranes Port Machinery, Shanghai Zhenzhong Machinery Manufacturing), logistics and related services (Xingyue Warehousing, Shanghai Zhongji Yangshan Container Service), and machinery processing and manufacturing (Pugang Machine Tool, Saili Metal Produce, Jiayi Machinery Manufacturing). With the support of major projects and the boost from the synergy between Zhangjiang and Lin-gang, the park further extended to sectors such as suppliers and key parts of new energy vehicles, suppliers to smart manufacture, and suppliers to integrated circuits. Its focus of tenant attraction is on new energy vehicle and auto part manufacturing, and integrated circuits related to marine engineering and shipbuilding.

**Tenant Companies:** Konecranes Port Machinery (Shanghai), Shanghai Anchi Intelligent Fireproof Cable.



### LIN-GANG NICHENG PARK

As the first stop on S2 Highway to Lin-gang, the park is also known as "the gate to Lin-gang". It has a planned area of 8.3 km<sup>2</sup>, including industrial land of 104 acres (of which 83 mu is for standard workshops and 68 mu for heavy machinery workshops), and reserved land stretching hundreds of mu, providing enough space for future industrial development. It now offers two supportive parks in high demand, Sapphire Park and Ruby Park. Sapphire Park is a key industrial park in the Nicheng Township, which locates at the east of Lin-gang Special Area. It is a high-tech park for new energy vehicle services, integrated circuits, and high-end medical equipment. With strong support from Lin-gang Group and local government, it has attracted hi-tech companies in advanced manufacturing, set up a business services platform that provides comprehensive services such as business registration, tax, fund raising, and policy interpretation, and established a supportive park to a special economic functional zone with more influence and competitiveness in international markets and free flow of investment, trade, capital, goods and jobs. Ruby Park is a smart manufacturing center for high-end auto parts. It is divided into several zones for high-end equipment (smart equipment and robotics), advanced manufacturing (auto parts, precision machinery, precision manufacture, and mold making), and supportive services (R&D, pilot scale production, scientific and technological innovation, and comprehensive services).

**Tenant Companies:** Swiftronic (Shanghai), Roxtec Sealing System (Shanghai), Sunglow Technology.



### LIN-GANG SHUYUAN PARK

With a planned area of 10.9 km<sup>2</sup>, Lin-gang Shuyuan Park focuses on following areas: automobile (automotive electronics such as the circuit board design of the core control parts) and auto parts services; bioengineering such as medical imaging and diagnostic equipment, electrical medical devices and monitoring systems, modern therapeutic equipment, rehabilitation engineering technology and facilities, R&D and production of bio-epidemic prevention devices, technological development of medical information technology and bio-technology; related industries of mobile telecommunications, microelectronic material R&D and manufacture, and integrated circuits and their producer services and chip testing. At present, Lin-gang Shuyuan Urban Industrial Park has completed the investment attraction of 1200-mu of land. The 15 tenant companies have a total investment of 2.05 billion yuan. 10 of them has finished construction (phase 1) and started operation. Their projects range from special automobile repacking and manufacturing, to surface plating of polymeric and laser membrane, special pipe sheet for tunnel, composite segment manufacture, hydraulic equipment, hydraulic motor manufacture, elevator and part manufacture, fire-fighting device, and equipment manufacture. The park has already demonstrated economy of scale.

**Tenant Companies:** Shanghai Fondin Bio-Tech, Shanghai Jindun Special Vehicle Equipment.



### LIN-GANG WANXIANG PARK

Phase 1 of Lin-gang Wanxiang Park, inaugurated on 11 December 2005, has a land area of about 1 km<sup>2</sup>. It has a total surface area of 659,000 m<sup>2</sup>, including 146,500 m<sup>2</sup> for standard workshops. The park is mainly for companies in auto parts, ship parts, elevator parts, and generic equipment. It is making effort to attract investment in the four major industries of Lin-gang Special Area, namely integrated circuits, artificial intelligence, biomedicine, and aerospace and aeronautics. Combined with the upgrade of its existing companies in equipment and manufacturing sector, Wanxiang Park aims to attract high-quality projects in next generation information technology, high-end equipment manufacture, smart connected vehicle, new material, new energy, energy conservation, and other advanced manufacture and strategic emerging industries, nurture a number of leading companies that have huge potentials and demonstrative roles in their respective industries, and form several clusters of advanced industries. It will also follow the development focus of modern services in Lin-gang Special Area, attract headquarters of well-known companies in the world, and create a cluster for high-end trading and modern service companies.

**Tenant Companies:**  
**Integrated circuits:** Leixiang, Mike Auto Parts, Stueken Precision Deep Draw Technology, Westfalia Metal Hoses;  
**New material and new energy:** Lingchuan Electric Appliances, Qianheng Electric, Jinwei Electric Appliance, Shinenergy Technology;  
**Core ship parts and marine engineering:** Rongyong Machine Manufacture, Sanfeng Metal Structure;  
**Intelligent manufacture and equipment:** Carbon Block Technology, XWME, Armor Machinery Equipment, Fangzhan Fire Technology.



**COMPREHENSIVE  
BUSINESS ENVIRONMENT**

**PAGE 62.**  
01. Special Preferential Policies

**PAGE 65.**  
02. Business Environment

**PAGE 68.**  
03. Risk Prevention

**PAGE 69.**  
04. Ecological Environment

**PAGE 74.**  
05. Urban Facilities

**PAGE 83.**  
07. Service Centers

**PAGE 80.**  
06. Land Planning



## Land Policies:

According to the Overall Plan, the first stage of the development of Lin-gang Special Area is carried out in Nanhui New Town, Xiaoyangshan Island, the southern part to Pudong International Airport and Lin-gang Equipment Industrial Zone, covering 119.5 km<sup>2</sup>. Several Opinions on the Implementation of Preferential Policies to Boost High-quality Development of Lin-gang Special Area of the China (Shanghai) Pilot Free Trade Zone by CPC Shanghai Committee and Shanghai People's Government clearly encourages the conservation of land, and the intensive and mixed land use. Policies for mixed and innovative used of industrial land are applied, which promotes the mix of industry, R&D, office, and pilot scale production, and accelerates the clustering of R&D and headquarters functions.

### Implementation Opinions on Supporting the Increase of Industrial and R&D Land Plot Ratio in Lin-gang Special Area

<b>Main content.</b>	Clearly state the details of the management, planning and implementation of land supply, and the requirement of performance evaluation of enterprises in Lin-gang Special Area.
<b>Detailed measures.</b>	Encourage high-quality projects to increase plot ratio and underground spaces. Simplify the procedures for the planning adjustment of industrial land. Cut the expansion cost for high-quality industrial land.
<b>Scope of application.</b>	"Industrial park platforms" in the document refer to platform companies, certified by Ling-gang Special Area Administration, that are responsible for the development, construction, operation, and management of various industrial parks.
<b>Detailed measures.</b>	Policies for the acquisition of new land or existing land, lower land use cost for industrial park platforms, innovative land use, encouragement of mixed land use, and the transfer or lease of property.

### Talent Policies:

Lin-gang Special Area emphasizes the attraction, retainment, and cultivation of talents, and offers all-round measures to ensure that all talents will achieve their full potential. A number of policy documents were announced since August 2019, including Several Opinions on the Implementation of Preferential Policies to Boost High-quality Development of Lin-gang Special Area of the China (Shanghai) Pilot Free Trade Zone, Notice on the Implementation of Preferential Policies to Boost High-quality Development and Attract Domestic Talents in Lin-gang Special Area, and Several Measures to Support the Talent Development in Lin-gang Special Area of the China (Shanghai) Pilot Free Trade Zone. The specific measures include bonus points for the application of residence permit, reduction of wait time for the transition from residence permit to household registration, direct household registration for talents with skills in



Implementation Opinions on Supporting the Increase of Industrial and R&D Land Plot Ratio in Lin-gang Special Area



Implementation Opinions on Supporting Industrial Park Platforms to Enhance Innovation Service Capacity in Lin-gang Special Area

short supply and special talents, approval for direct household registration of attracted domestic talent and returned overseas Chinese students, and recommendation from key talent attraction agencies. In terms of housing supply, a number of measures were announced to ensure the diversification of housing supply and the encouragement of renting an apartment. According to the provisions of Several Measures, Lin-gang Special Area Administration will recommend key talent attraction agencies based on the layout of key industries and actual development needs. Once an employer is certified as a key institution, its core business personnel with skills in short supply, bachelor's degree or above, and at least two years' working experience in the related area can directly apply for Shanghai household registration.

### Domestic talents:

1. Approval from Lin-gang Special Area: attracted talents and returned overseas students can directly apply for household registration.
2. Reduced wait time for the transition from residence permit to household registration: the wait time for the transition is reduced from 7 years to 5 years (with the applicant working in Lin-gang Special Area for at least 3 years). The wait time may be further reduced to 3 years when certain conditions are met (with the applicant working in Lin-gang Special Area for at least 2 years).
3. Bonus points for residence permit: those who hold a Shanghai residence permit will get 2 points for every full year of working and living in Lin-gang Special Area. The bonus points start to count toward the total points from the end of the 3rd year, and the maximum of the bonus is 20 points.
4. Bonus points for fresh graduates employed by public welfare establishments. Fresh graduates from outside Shanghai will have 3 bonus points for their application for Shanghai household registration if they are employed by public welfare establishments such as schools and hospitals.
5. Channels for talent attraction are expanded: the talent attraction catalog is published.

### Overseas talents:

1. Overseas practitioners can practice in Lin-gang Special Area after proper registration: professionals holding overseas qualifications for finance, architecture, planning or design can practice in Lin-gang Special Area after proper registration. Their work experience overseas can be counted toward their work experience in China.
2. Overseas talents may attend vocational qualification exams. Overseas talents working in Lin-gang Special Area may attend vocational qualification exams for real estate appraiser and certified urban and rural planner.
3. Returned overseas students and overseas talents are encouraged to start their own business. Lin-gang Pioneering Park was established to provide special support to start-up projects that meet certain conditions. Foreign students who intent to start their own business in Lin-gang Pioneering Park will be granted a work permit. Their start-up experience in the park will be deemed as work experience.
4. Outstanding foreign students are encouraged to work in Lin-gang Special Area. Outstanding foreign students who have obtained a bachelor's degree or above in a famous foreign university, when certified by Lin-gang Special Area Administration, can directly go through the procedures for foreigners working in China, apply for residence permit (work type), and work in Lin-gang Special Area.
5. Overseas Talent Residence Permit (B Permit): returned overseas Chinese with a foreign nationality who work in Lin-gang Special Area may apply for the long-term (maximum validity of 10 years) Overseas Talent Residence Permit (B Permit) and are exempt from applying for a work permit.
6. Work permit for foreign talents: employment restriction on ages, education and work experience may be relaxed for foreign talents who meet certain conditions. They will receive a work permit with a validity of 2 years or above.
7. Bonus points for foreigner's work permit and talent visa: a maximum of 10 additional points as local incentives for work permit and talent visa for foreigners recommended by Lin-gang Special Area Administration.



Guide to Applying for Letter of Certification for Foreign Students in Shanghai Universities Starting Part-time Business by Lin-gang Special Area Administration of China (Shanghai) Pilot Free Trade Zone (Recommendation for Adding "Start Business" on Residence Permit for Study)



Guide to Applying for Certificate of Employment in Lin-gang Special Area of China (Shanghai) Pilot Free Trade Zone for Outstanding Foreign Graduates from High-level Foreign (Overseas) Universities



Nicheng Relocation Apartments (Phase 2)



Wanxiang Relocation Apartments



Luchaogang Relocation Apartments (Phase 3)



Commodity Apartments

### Housing Policies:

**Tweaks of house purchasing policies for certain talents:** for those who meet certain conditions and work in industries in line with regional development and industrial orientation, the apartment purchase quota of talents without Shanghai household registration is counted based on individuals, instead of households. They are allowed to purchase one commodity apartment in Lin-gang Special Area. Talents without Shanghai household registration must pay personal income tax or social security in Lin-gang Special Area for a certain number of years before they can purchase a property in the area. The minimum payment period is shortened from at least 5 years consecutively to at least 3 years consecutively.

**Priority in choosing and buying apartment:** the permanent residents in Lin-gang Special Area with a stable employment in the area may have priority in choosing and buying an apartment if they meet the requirement of apartment purchase.

**Public rental housing that is “rented before sold”:** the apartment will be rented out as public housing within 10 years of its completion. 50% of such property may be purchased by enterprises or organizations in the form of entire building to use as rental housing for their employees. After 10 years, the property can be sold on the market as individual apartment.



Several Measures to Support Talent Development in Lin-gang Special Area of China (Shanghai) Pilot Free Trade Zone



Scope of Application and Operation Methods of Talent Apartment Policy in Lin-gang Special Area of China (Shanghai) Pilot Free Trade Zone



Business Environment 3.0 is benchmarked against the most competitive free trade zones and the international economic and trade agreements of the highest standards that are widely recognized in the world. It will take Lin-gang Special Area 3 years to make itself into a role model of sound business environment in Shanghai and China, while enjoying international fame.

Lin-gang Special Area Business Environment Development Report was released on 12 June 2020, which shows that according to the Doing Business Index of the World Bank, the business environment of Lin-gang Special Area is at a world-leading level.

The Report adopts an assessment system of “18+N” indicators, including 10 World

Bank indicators, 8 national indicators, and 6 Lin-gang indicators for business environment. The World Bank's Doing Business indicators study the whole life cycle of enterprises and give scores that are comparable among different counties and regions. They include starting a business, dealing with construction permits, getting electricity, registering property, getting credit, protecting minority investors, paying taxes, trading across borders, enforcing contracts, and resolving insolvency.

In general, the business environment in Lin-gang Special Area is in the upper echelon in the world, with some of the indicators at world-leading level. At the same time, Lin-gang Special Area has a mature mechanism to safeguard major investment projects, a high-quality service system for domestic companies, and improving public services.

### Implementation of 3-year Action Plan



In the next three years, Lin-gang Special Area will endeavor to replicate the success of Tesla Gigafactory and apply the same administrative approval model to other investment projects. Also, it will streamline and integrate administrative approval procedures by 4 “subtraction” (i.e. “subtraction” in application documents, approval items, approval procedures, and administrative charges) and 4 “addition” (i.e. “addition” in integrated service, service menu, service capacity, and integrity system).

Lin-gang Special Area has proposed 9 innovative projects throughout business life cycle, tackling possible problems in business registration, foreign-related legal issues, talent service, international trade, cash flow, infrastructure support, reduction of charges and taxes, innovation and starting up business. Combined with the all-in-one portal for online government services, they significantly enhance the easiness of business activity and embody the policy advantages in Lin-gang Special Area.

Following the World Bank's and national Doing Business Index and the reform tasks in Business Environment 3.0, Lin-gang Special Area, with an eye on the most competitive free trade zones in the world, the experience and practices of advanced economies, and international norms, will publish a series of reform measures to cover the periods before, during, and after business licensing, and continuously improve its business environment.



Implementation Plan to Comprehensively Deepened the Construction of World-leading Business Environment in Lin-gang Special Area of China (Shanghai) Pilot Free Trade Zone



Lin-gang Special Area Business Environment Development Report

Featured Business Environment Indicators

# 18+N

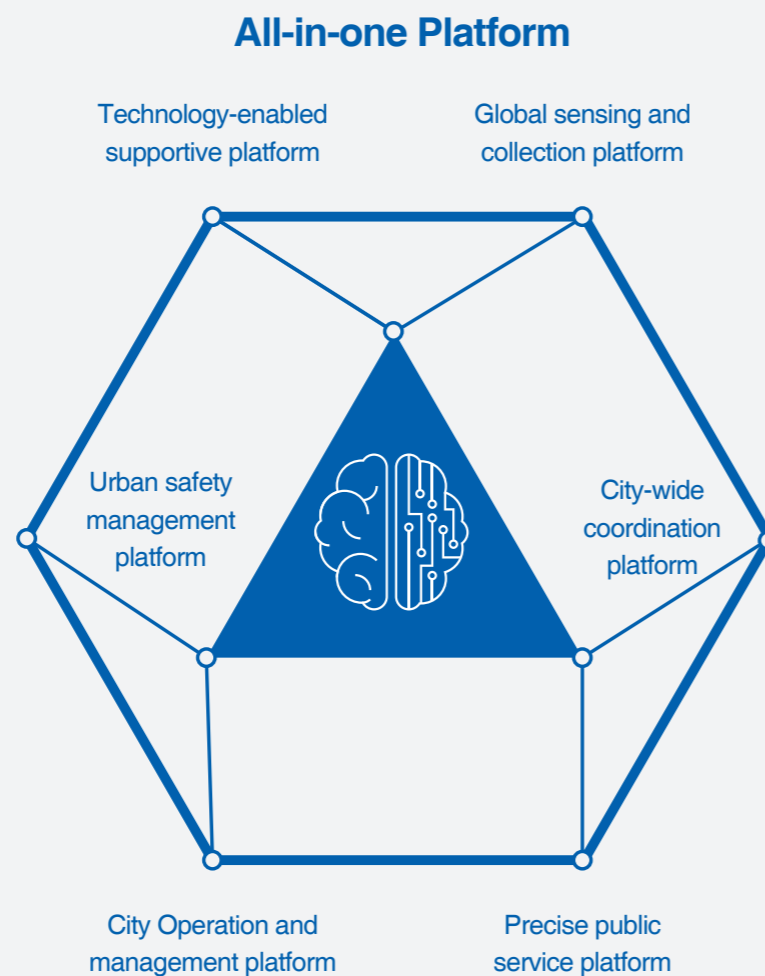
In the Implementation Plan, it is also stated that a leading group for business environment will be established to coordinate the construction of business environment in Lin-gang Special Area, and that a “18+N” featured indicator system will be set up to continuously evaluate the business environment. These measures aim to safeguard the stable and rapid development of business environment in Lin-gang Special Area.

To meet the requirement of “one screen to cover every corner of the city”, Lin-gang Special Area has set up a “1+3+6” City Brain to effectively handle various issues. “1” stands for one platform of City Brain. “3” stands for the three main areas in urban governance, namely “AI + urban districts”, “AI + tourist attractions”, and “AI + industrial parks”. “6” stands for the six basic abilities for urban governance, namely visualization, sensing, management capacity, data collection, graphic representation, and computing power. The “1+3+6” City Brain makes possible an AI-powered refined urban management system that can actively detect problems, automatically push the problem to respective department, and handle the problem in a close-loop.

Lin-gang Special Area is also constructing a “1+1+6” operation management system:

- One portal: Lin-gang’s urban operation and management portal
- One center: city operation and management center
- Six platforms:

- Technology-enabled supportive platform,**
- Global sensing and collection platform,**
- City-wide coordination platform,**
- Urban safety management platform,**
- City Operation and management platform,**
- Precise public service platform.**



The integrated information management and service platform in Lin-gang Special Area is an online portal for all the business-related administrative affairs in the City-Industry Integration Zone.

It joins forces with the Administration, competent authorities of industry, local enterprises, and relevant operation entities, makes use of the latest technologies such as artificial intelligence, blockchain, 5G, and big data, integrates the information from competent national authorities with the operation and management information in Lin-gang Special Area, combines the functions of the online administrative affairs portal with the unified management platform, established an accurate prediction and early warning system for risk prevention based on digital governance, and provides assurance to institutional innovation and further opening-up. Whole life-cycle service from project application and approval to business credit management is provided to construction projects. The goal is to achieve “Five 100”, namely 100% document submission with one visit to the window or less, 100% online application, 100% coverage of “Get it Done” packages, start of construction within 100 hours of land grant, and 100% traceability of administrative behaviors.

The Platform 2.0, which will be launched in Lin-gang Special Area very soon, will innovate the mode of supervision. With the upgrade of information technology, the new platform will balance the risk management in all aspects and in key areas, combine the close-loop risk monitoring of the whole life cycle with the dynamic early warning of risks, and integrate information from different department to coordinate the risk supervision at a higher level.



### Risk prevention in Lin-gang Special Area

Lin-gang Special Area has a risk prevention system that is based on an integrated platform for information service and management. The system effectively prevents risks by its differentiated, coordinated and intelligent supervision, innovates the methods of government administration, pushes for a comprehensive regulatory system comprising self-discipline of enterprises, co-governance of the industry, public scrutiny, and government supervision, comprehensively enhances the capacity of risk prevention and safety regulation, and assures the comprehensive and high-quality opening-up in Lin-gang Special Area on deeper levels, in broader areas, and with stronger determination.

#### Intensify regulation in key areas:

Lin-gang Special Area improves the regulation of the security review of foreign investment, anti-monopoly investigation, industrial management, user authentication, and behavior auditing in key areas such as investment, trade, finance, Internet, ecology and environment, culture safety, immigration, anti-terrorist and anti-secession, and public ethics, and enforces strict, precise and effective supervision.

#### Establish information management and service platform:

Lin-gang Special Area has an integrated information management and service platform covering the Administration, competent authorities of industry, local enterprises, and relevant operation entities. The platform provides enterprise with facilitation in international trade and project registration, using the information technologies for risk analysis, prevention and control.

#### Enhance the prevention of financial risks:

With the mandate from national financial authorities, a unified and efficient financial management system is set up to strength the coordination with national financial regulators. Latest technologies are employed to enhance the capability of financial service and supervision, fight against all kinds of illegal financial activities, and effectively ward off financial risks.

#### Improve monitoring and early warning:

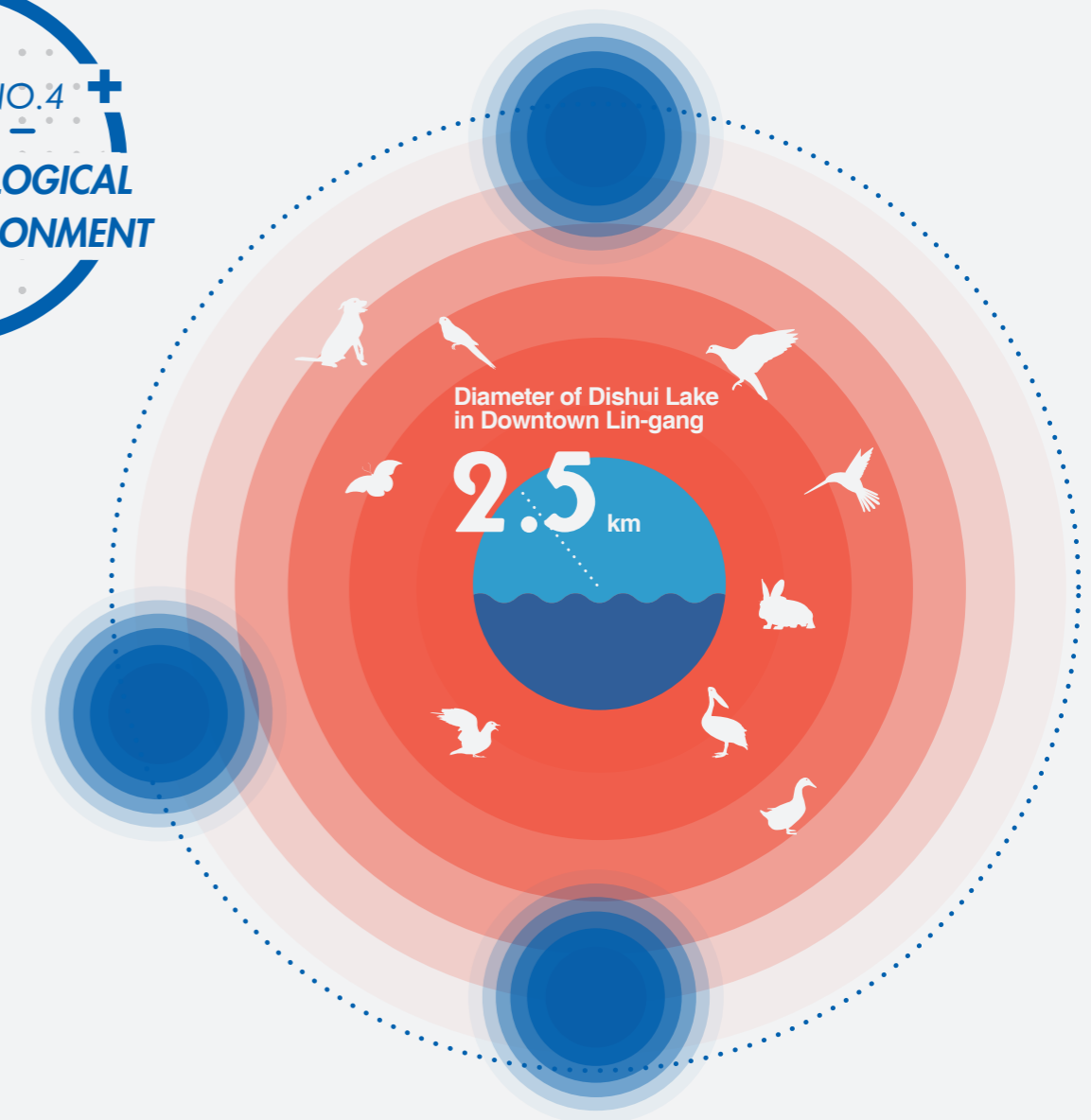
Lin-gang Special Area established an accurate risk monitoring system for areas such as inspection and quarantine, country of origin, intellectual property rights, international conventions, and cross-border capital flow. It provides real-time risk monitoring for the entire process, as well as a dynamic early warning system for risk management.

#### Implement categorized business credit management:

Lin-gang Special Area implement categorized credit management for businesses. It has improved the basic rules and standards for credit rating, so that companies with a high rating will get preferential treatment in terms of policy application and institutional facilitation. Misconduct of companies will be disclosed. Those on the blacklist will be denied market access or forced to withdrawn from the market.

#### Strengthen the supervision of border security:

Lin-gang Special Area has advanced and smart infrastructure for regulation. Regulatory information is shared and recognized among different government departments. The immigration control is improved. The import and export of goods are subject to better supervision.



Total area reaches  
**5.56**  
KM<sup>2</sup>

Green and water coverage  
in downtown Lin-gang reaches  
**65%**

PM2.5  
**30**

As a waterside city, Lin-gang boasts abundant coastal water, forest, and wetland resources. The Dishui Lake, located in the downtown area of Lin-gang, is the largest artificial landscape lake in China, which has a diameter of 2.5 km and a surface area of 5.56 km<sup>2</sup>. Three picturesque islands sit at the north, west and south of the lake. In 2009, Dishui Lake was selected as a national scenic spot for water conservation. The green and water coverage in the downtown area of Lin-gang reaches 65%, helping to maintain the annual average of PM2.5 reading at around 30. Lin-gang Special Area will strengthen the conservation of ecological zones for river, lake, forest and wild animal, build green pathways, suburban parks and urban parks along the coast, and encourage the integration of ecological space and resort area.

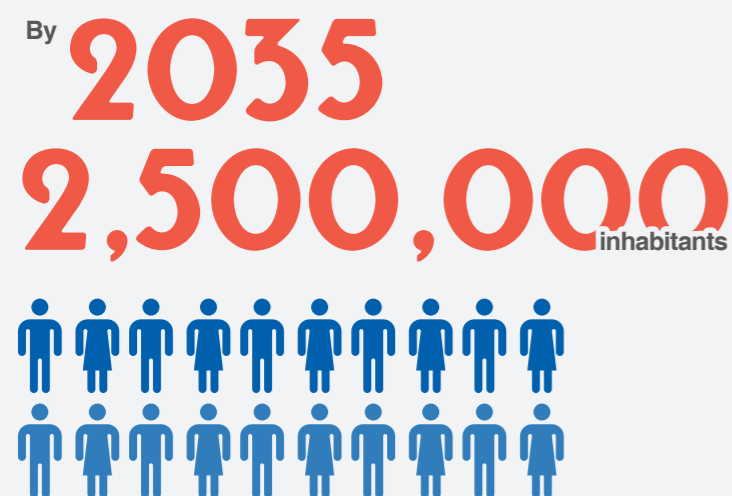
**Garden City:**

Garden City is one of the projects in the ecological strategy of Lin-gang Special Area. It targets the management and repair of ecological environment and goes hand in hand with other environmental projects such as increasing green ratio, fighting air pollution, and treating black and stinky rivers. The planning of Garden City is combined with the overall urban planning to improve the construction of urban green land. Related information of projects pending approval, under construction, or under renovation shall be shared in time to make sure that both short-term and long-term needs are considered. The detailed plan is now being studies according to the Green Land and Forestry Land Planning in Lin-gang Special Area for the 14th Five-Year Plan. It will be improved and specified in accordance with the overall planning of urban construction in Lin-gang Special Area in the principle of “high-level planning, high-standard construction, and high-efficiency management”

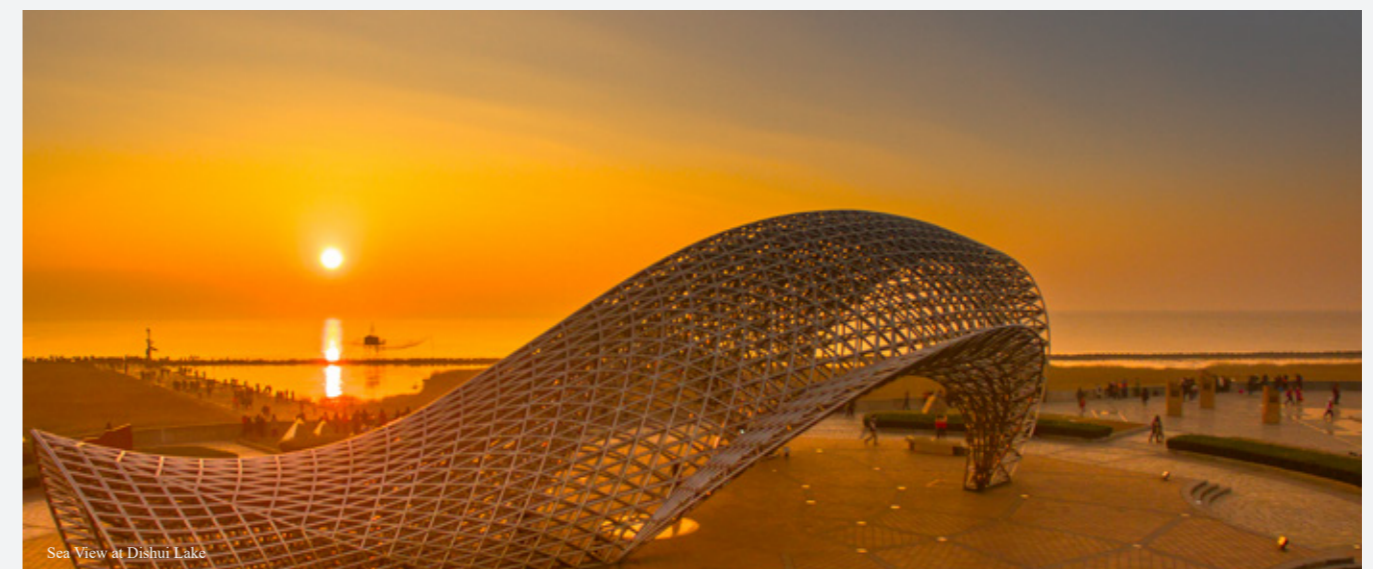
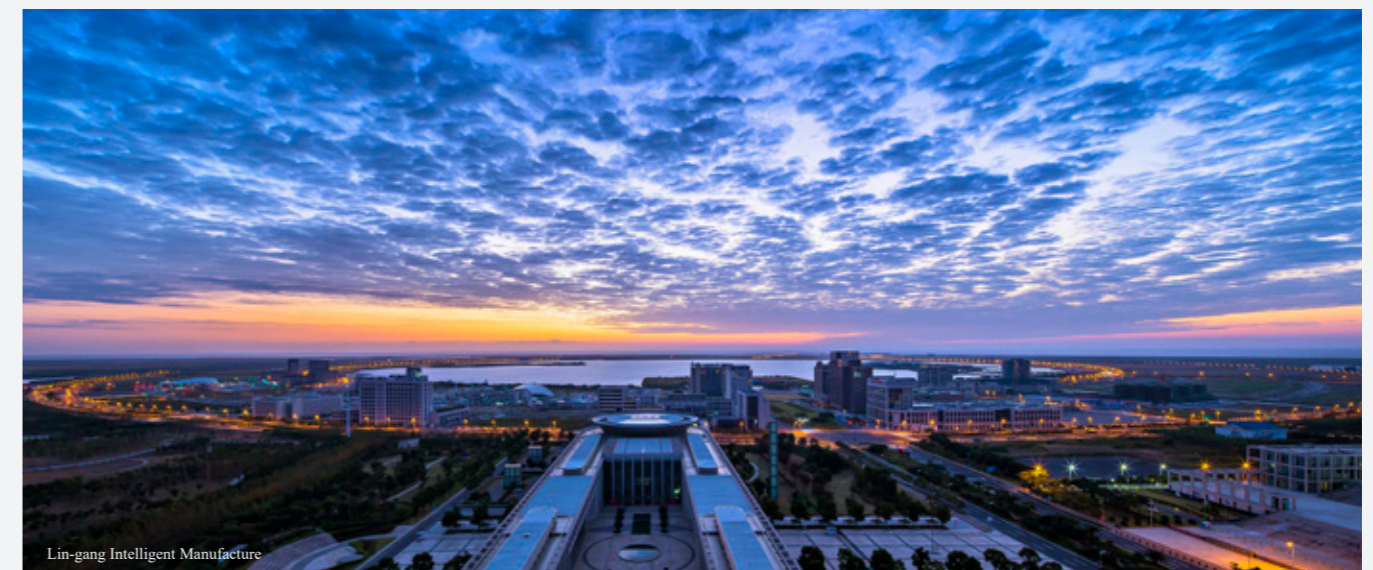
**Waste-free City:**

Another important concept in building an ecological city in Lin-gang is the Waste-free City. Its main idea is promoting an innovative, coordinated, green, open, and shared development model. By encouraging green development and lifestyle, Lin-gang will continue to reduce the amount of solid waste from its origin, increase garbage recycle, cut landfill and incineration as much as possible, and minimize the negative impact of refuse on city environment.

Waste-free City does not mean that Lin-gang will not discharge any waste, nor does all refuse will be recycled as resources. Rather it is an advanced idea of city management to minimize the production of solid waste, maximize the recycle of trash, and ensure the safe treatment of garbage.



The increase of population in Lin-gang Special Area will accelerate. Its permanent population will reach 1 million by 2025, and 2.5 million by 2035. To meet the basic living demands of such a large number of inhabitants, Lin-gang Special Area is working hard to ensure the supply of comprehensive and varied living facilities and avoid becoming a “ghost city” at night. The community life should be attractive enough to make people want to stay and prevent “tidal effect” in daily commute. In addition, issues such as ecological conservation, green ration, environmental protection, and energy conservation should also be managed properly. With the ideas of a future city in mind, Lin-gang is planning functions such as central business district, large resident community (international community), and supportive service zone. International high-caliber talents will easily find residence, commerce, education, health care, ecological, culture, sports, leisure and entertainment facilities in this modern city with deep city-industry integration, diversified culture, and balanced ratio of employees to local inhabitants.





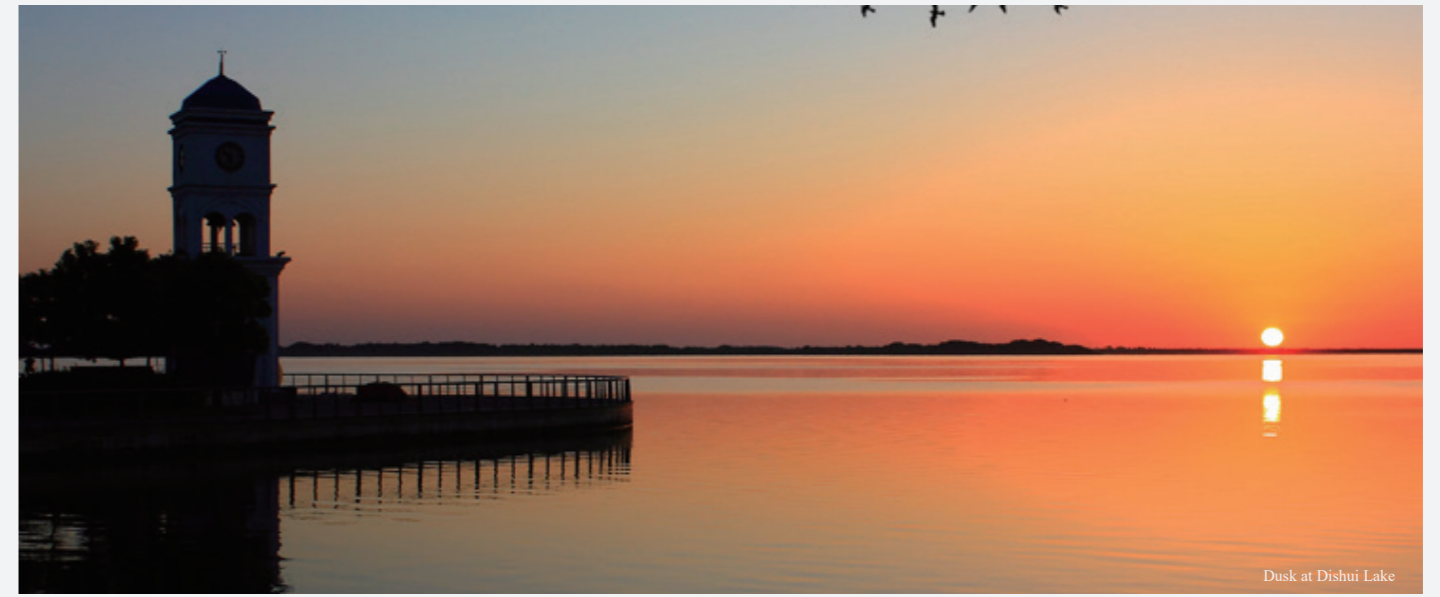
Nightfall at Nanhuizui Park



Shanghai Flower Port



Scenic Belt around Dishui Lake



Dusk at Dishui Lake



Donghai Bridge



Lin-gang Special Area has improved the supply of public resources in social causes. In terms of basic resources, 8 public schools and 2 community health care service centers are under construction, and the construction of Luchaogang Nursing Home, Wanxiang Culture and Sports Center, Lin-gang Youth Activity Center will start in this year. In terms of high-quality resources, famous schools and hospitals in downtown Shanghai have opened campuses in Lin-gang. Shanghai Middle School will have a senior high department in its East Campus. Premium private schools will be opened in Lin-gang Science and Technology City and Jinqiao Lin-gang Park. The construction of the international center of Shanghai No. 6 People's Hospital (East Campus) will be started. Private hospitals and clinics are encouraged in Lin-gang Special Area.

### Public Cultural and Tourist Facilities

Sailing Club	Haichang Polar Ocean Park
Wintastar	Shanghai Binhai Forest Park
China Maritime Museum	Nanhuizui Park
Shanghai Astronomy Museum	

### Kindergarten

Shanghai Lin-gang New City Haiyin Kindergarten (North Campus)
Shanghai Lin-gang New City Haiyin Kindergarten (South Campus)
Pengzhen Kindergarten (Yunxiu Campus)
Pengzhen Kindergarten (Yunhan Campus)
Nicheng Kindergarten (160 Nicheng Road)
Nicheng Kindergarten (140 Xianguang Road)
Shanghai Pudong Shuyuan Kindergarten (Lize Campus)
Shanghai Pudong Bing Chang-tian Lin-gang Kindergarten (Xiali Campus)

### Medical and Health Care Resources in City-Industry Integration Zone

Hospitals
Shanghai No. 6 People's Hospital (East Campus)
Luchaogang Community Health Care Service Center
Shuyuan Community Health Care Service Center
Nicheng Community Health Care Service Center
Wanxiang Community Health Care Service Center
Situan Pingan Community Health Care Service Center

### Senior Care Resources in City-Industry Integration Zone

Public pension institutions
S.H. Shuyuan Xinyuan Nursing Home
S.H.Wanxiang Leling Nursing Home
S.H.Fengxian Situan Nursing Home
S.H.Haiwan Nursing Home
Private Senior Care Institutions
S.H. Chunlei Senior Care Center
S.H. Jianguo Senior Care Center
S.H. Mingjia Senior Care Center
S.H. Renai Senior Care Center
S.H. Huakang Hengyu Nursing Home
S.H. Jiajiale Nursing Home
S.H. Lingang Senior Care Center

### Education Resources in City-Industry Integration Zone

Universities	Sino-Foreign Cooperative Education	Nine-year Schools
S.H.Dianji University	China-UK Low Carbon College, Shanghai Jiao Tong University (secondary college)	S.H. Pudong Qiu Ping School
S.H.Maritime University	The (Sino-French) Institute of Arts and Design Management, Central Academy of Fine Arts (Sino-foreign cooperative education)	S.H. Wanxiang School
S.H.Jian Qiao University		S.H. Private Hugang School
S.H.Ocean University		S.H. Fengxian Wusi School
S.H.University of Electric Power		Lingang Foreign Language School Affiliated to WFL Education
		S.H. Fengxian Pingan School
		S.H. Fengxian Shaochang School

Middle Schools	Adult Schoolst	Primary Schools
S.H.Middle School (East Campus)	Wanxiang Adult Technical School	S.H.Pudong Mingzhu Lingang Primary School
S.H.Pengzhen Middle School	Shuyuan Adult Cultural and Technical School	S.H.Pudong Mingzhu Lingang Primary School
S.H.Xingang Middle School	Nicheng Adult School	S.H.Pudong Nicheng Primary School
S.H.Lin-gang Experimental Middle School	Nanhui Adult Cultural and Technical School	S.H.Pudong Nicheng Primary School
S.H.Lin-gang No.1 Middle School	Nanhui Community (Elderly) School	S.H.Pudong Jianping Lingang Primary School
S.H.Shuyuan Middle School		S.H.Pudong Jianping Lingang Primary School
S.H.Nicheng Middle School		S.H.Pudong Lingang Foreign Language School
		S.H.Pudong Xingang Primary School
		S.H.Pudong Shuyuan Primary School

Shanghai Pudong Shuyuan Kindergarten (Shipile Campus)	Shanghai Fengxian Mantianxing Kindergarten
Shanghai Pudong Xinyuan Kindergarten	Shanghai Pudong Chaohe Kindergarten (North Campus)
Shanghai Pudong Wanxiang Kindergarten (Xiangnan Campus)	Nicheng Kindergarten (22 Nicheng Road)
Shanghai Pudong Fangzhu Kindergarten	Yunrui Kindergarten
Shanghai Pudong Wanxiang Kindergarten (Xianglong Campus)	Shanghai Pudong Bing Chang-tian Dishui Lake Kindergarten (Yihao Campus)
Shanghai Pudong Luchaogang Kindergarten	Shanghai Pudong Bing Chang-tian Dishui Lake Kindergarten (Moli Campus)
Shanghai Pudong Xingang Kindergarten	Shanghai Fengxian Mantianxing Kindergarten (Pingan Campus)
Shanghai Pudong Chaohe Kindergarten (South Campus)	Shanghai Fengxian Mantianxing Kindergarten (Shaochang Campus)





Harbour City Plaza



Sailing Club

Wintastar



Shanghai Astronomy Museum

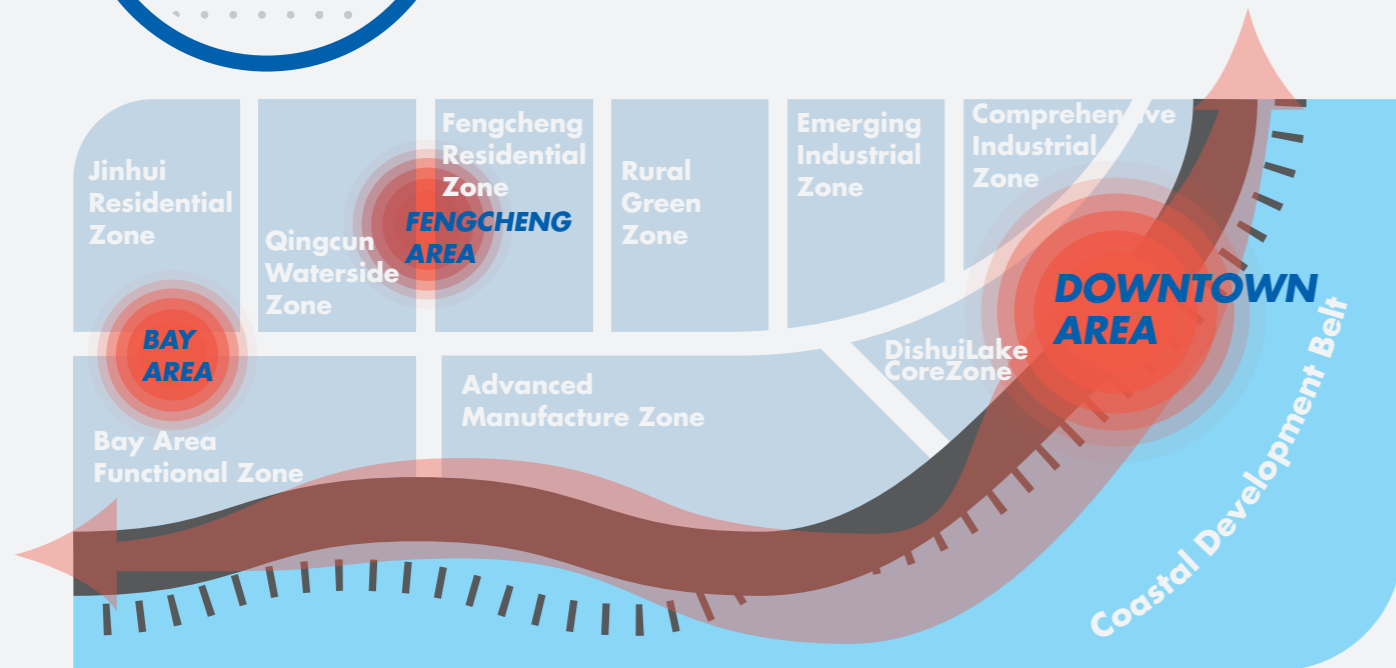


Haichang Polar Ocean Park





# 2019-2035 OVERALL PLANNING



## Spatial Layout with Multiple Centers and Clustering Development

The spatial layout is an extension and expansion of the “Shanghai 2035 Master Plan”. The downtown area of Lin-gang Special Area is an expansion of the former Nanhui New City to underline the modern city and special economic functions. The center of the former Nanhui New City is enlarged to build a central business district for Lin-gang Special Area. It is in essence a sub-center of Shanghai that focuses on the core functions of Lin-gang and demonstrates the image of a coastal city. The layout of residential and industrial areas in surrounding townships such as Huinan and Fengxian New City are coordinated to promote synergy in development.

## Spatial Layout of “One Belt, Three Cores, Three Corridors, Nine Zones”

The spatial layout of “One Belt, Three Cores, Three Corridors, Nine Zones” is set to strengthen the clustering of the coastal belt, improve the resource allocation of transport, industries, coastal line and space, and ensure the balanced development of the east and west ends of Lin-gang.

One Belt: the coastal development belt is situated on the coastal transport corridor, connecting the core zone, industrial zones and residential zones of Dishui Lake.

Three Cores: one main core consists of the functional core of the downtown area, which focuses on the clustering of new trade, cross-border finance, headquarters economy, and shipping service; two support cores are the functional cores of Bay

Area and Fengcheng Area, which play a leading role for the development of surrounding places.

Three Corridors: the ecological corridor of the Dazhi River, Pudong-Fengxian ecological corridor, and the ecological corridor along S3-Punan Canal-Dalu Line (Tuanlu Port)-Bailong Port.

Nine Zones: The ecological corridor is divided into 9 zones with proper size and complete functions, which include 4 zones in downtown area (Dishui Lake Core Zone, Comprehensive Industrial Zone, Advanced Manufacture Zone, and Emerging Industrial Zone) and 5 zones in surrounding areas (Fengcheng Residential Zone, Bay Area Functional Zone, Rural Green Zone, Qingcun Waterside Zone, and Jinhui Residential Zone). The industries among different zones are mutually enhancing, with easy connection of transport and spatial design in harmony, to achieve the integrated development of urban and rural areas. Two ecological centers are planned in the Emerging Industrial Zone and Bay Area Functional Zone, namely Lin-gang Green Heart and Shanghai Haiwan National Forest Park.



## International, Modern, and Comprehensive Communities

Local communities have strong features of Lin-gang Special Area in providing living and leisure services such as retail, culture, sports, tourism, and health care. They are appealing enough to make people want to visit and stay in Lin-gang.

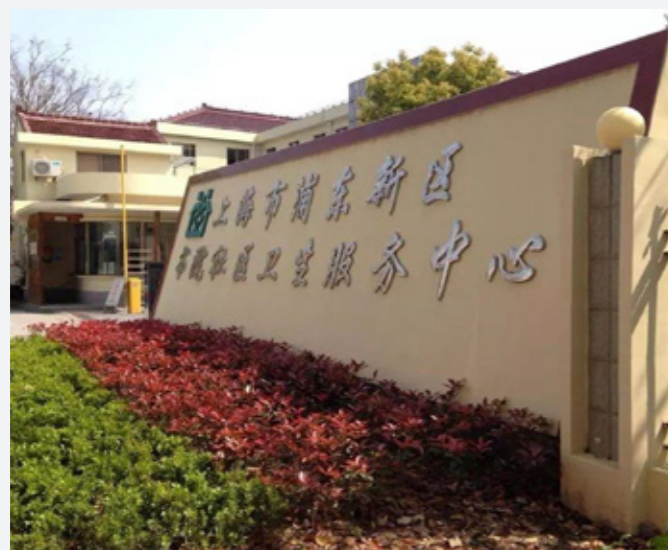
The consumption cluster in the downtown area provides high-end cross-border shopping experience comparable to that in Dubai, Singapore, or other free trade ports. It is attractive to domestic consumers, foreign tourists in China, and outbound Chinese tourists alike. Commercial facilities in the communities will be upgraded to form a more convenient and accessible retail network for everyone.

Such communities will eventually become urban commercial centers for international culture, tourism and vacation, and city-industry integration zones for international culture, tourism, vacation, entertainment, and consumption in Lin-gang and the Yangtze River Delta.



## Culture, Education, and Neighborhoods

Public facilities closely related to people's life (such as those for culture, education, and health care) are built in sufficient numbers. Famous cultural companies in China and abroad are registered in Lin-gang Special Area to enhance the capacity of cultural industry in the area. Educational institutions from kindergartens to universities are opened to nurture a sound educational environment. Hospitals and nursing homes are easily accessible to local inhabitants. All these efforts have made Lin-gang Special Area a cozy place to live, where soft environment is warm and welcoming, and hard infrastructure is sound and complete.



## Investment Promotion and Service Center of Lin-gang Special Area, China (Shanghai) Pilot Free Trade Zone

Investment Promotion and Service Center of Lin-gang Special Area of China (Shanghai) Pilot Free Trade Zone (hereinafter referred to as Investment Promotion Center) (formerly known as Business Service Bureau of Lin-gang Area) was unveiled on 28 November 2019. It is a statutory body under the Lin-gang Special Area Administration of China (Shanghai) Pilot Free Trade Zone, operated on a market basis by Shanghai Lin-gang Business Service and Development Co., Ltd. Lin-gang Special Area Administration has tasked the Investment Promotion Center to strengthen business attraction, investment attraction, and business service in a well-planned, integrated, coordinated, and comprehensive way, and enhance the communication with the municipal investment promotion center. According to the socio-economic development goals of Lin-gang Special Area, the Investment Promotion Center takes charge of the management of Nanhui New City Business Service Center, coordination of the investment attraction, business service, and talent service of the townships (Nicheng, Wanxiang, and Shuyuan) and developers in Lin-gang Special Area, improvement of resource allocation, attraction of various businesses that are in line with the development need and industrial direction of Lin-gang Special Area, create a sound environment for investment, and support the high-quality development of Lin-gang Special Area.

**Address:**7-8th Floor, Comprehensive Building, 200 Sheng-gang Avenue, Pudong New Area, Shanghai  
**Tel:**021-58285000  
**Website:**www.shlgservice.com

## Lin-gang Special Area Administration, China (Shanghai) Pilot Free Trade Zone

According to the Article 5 and 6 of Chapter II of the Administrative Measures for Lin-gang Special Area of China (Shanghai) Pilot Free Trade Zone, China (Shanghai) Pilot Free Trade Zone Lin-gang Special Area Administration (hereinafter referred to as the Administration) is an agency of Shanghai Municipal People's Government, and it is responsible for the implementation of various pilot reform tasks in Lin-gang Special Area, economic management of Lin-gang Special Area, and overall management and coordination of relevant administrative affairs in Lin-gang Special Area.

**In pursuance of the Administrative Measures, the Administration shall perform the following duties:**

- (1) Organizing the implementation of development plans, policies, and measures of Lin-gang Special Area, and formulating relevant administrative systems.
- (2) Taking charge of the administrative management of investment, trade, financial services, planning resources, etc.
- (3) Leading or coordinating the relevant administrative management of agencies located in Lin-gang Special Area, and establishing a mechanism of cooperation, coordination, and joint law enforcement with the agencies located in Lin-gang Special Area and relevant departments.
- (4) Planning and promoting the development and construction of Lin-gang Special Area, guiding the industrial layout and function development of Lin-gang Special Area, and coordinating the construction of major investment projects.
- (5) Carrying out the requirement of "one website for all services", implementing the "Internet Plus Government Service" in an all-round way, and providing guidance, consultation, and services to enterprises and related institutions in Lin-gang Special Area.
- (6) Leading the administration of Nanhui New Town, making overall planning for the economic management of other towns in Lin-gang Special Area, and coordinating and administrating the social affairs of Lin-gang Special Area in cooperation with relevant districts.
- (7) Performing other duties granted by Shanghai Municipal People's government.

**Address:**200 Sheng-gang Avenue, Pudong New Area, Shanghai, China  
**Tel:**8621-68283051  
**Website:**https://www.lgxc.gov.cn

Lin-gang Special Area Administration of China (Shanghai) Pilot Free Trade Zone	Take charge of the planning and promotion of the development and construction of Lin-gang Special Area	200 Shengang Avenue, Pudong New Area   (86) 21- 68283051
Administrative Service Center of Lin-gang Special Area, China (Shanghai) Pilot Free Trade Zone	Take charge of the examination and approval of business registration, construction projects, and industrial administration	811 No. 2 West Huanghu Road, Pudong New Area   (86) 21- 68286687
Investment Promotion and Service Center of Lin-gang Special Area, China (Shanghai) Pilot Free Trade Zone	Take charge of the investment attraction, investment promotion, enterprise service, and talent service in Lin-gang Special Area	7-8th Floor, 200 Shengang Avenue, Pudong New Area   (86) 21- 58285000
Shanghai Lin-gang Talent Service Center	Provide one-stop service to talent-related services, such as immigration, household registration, residence permit, social security, housing provident fund, talent development application, talent apartment, rent subsidy, and recruitment information	West Wing, 1st Floor, Zone C, Yiliu Tower, 888 No. 2 West Huanghu Road, Pudong New Area   (86) 021- 68289698
Shanghai Lin-gang Economic Development (Group) Co., Ltd.	Take charge of the land development, construction of infrastructure, investment attraction, industrial development, and supportive facilities in the Lin-gang Industrial Area	555 South Xinyuan Road, Lin-gang New City, Pudong New Area   (86) 21- 38298000
Shanghai Harbour City Development (Group) Co., Ltd.	Take charge of the land development, construction, and operation of the downtown area of Lin-gang	Harbour City Tower, 819 No. 1 West Huanghu Road, Pudong New Area   (86) 21- 68283030
Shanghai Lin-gang New City Investment & Construction Co., Ltd	Take charge of the construction, management, and maintenance of municipal infrastructure, development and operation of real estate properties, investment and financing of funds, investment attraction, and development of culture, tourism, and commerce.	5th Floor, Comprehensive Building, 200 Shengang Avenue, Pudong New Area   (86) 21- 38072300
Lin-gang Command Center of Shanghai Lujiazui (Group) Co., Ltd.	Take charge of the construction and development of large-scale urban complex in the downtown area of Lin-gang with functions for high-end office, international convention center, luxury hotel, retail, culture, and mansions	No. 2, Lane 158, Zishan Road, Pudong New Area, Shanghai   (86)21-68282376
Modern Service Open Zone of Lin-gang Special Area	Take charge of the development, construction, industrial attraction, function innovation, and investment attraction in the core area of Modern Service Open Zone	11-12th Floor, Building A4, 158 Zishan Road, Pudong New Area   (86)21-38298858
Lin-gang Industrial Area	Take charge of the development, construction, operation, management, and introduction of major industrial projects in Lin-gang Industrial Area, the core area developed by Lin-gang Group	555 South Xinyuan Road, Nicheng Township, Pudong New Area   (86) 21- 38298886
Yangshan Free Trade Zone	Take charge of the development, construction, industrial attraction, function innovation, and investment attraction in the Yangshan Free Trade Zone of Lin-gang Special Area	6th Floor, Guomao Center, 188 Yesheng Road, Pudong New Area   (86)21-38298600
Lin-gang Science and Technology City	Take charge of the investment, development, operation, and supportive services of the industrial park	5th Floor, 399 No.1 Haiyang Road, Nanhui New City, Pudong New Area   (86) 21- 38298818
Lin-gang Fengxian Park	Take charge of the development, construction, operation, and management of the Lin-gang Fengxian Park (17.04 km <sup>2</sup> )	Building A, Lin-gang Fengxian Center, Lane 1800, Xinyang Road, Lin-gang Industrial Area (86)21-38298300
Lin-gang Industrial City	Take charge of the development, construction, and operation of the 3.5-km <sup>2</sup> Lin-gang Innovation and Entrepreneurship Belt in Lin-gang Industrial City	No. 9, Lane 1411, Yunduan Road, Nicheng Township, Pudong New Area   (86) 21- 38294768
Lin-gang Pudong New Economy Park - Nanhui New City	Take charge of the land development, construction of infrastructure, investment attraction, industrial development, and supportive facilities in the Lin-gang Industrial Area	5-8th Floor, 298 No.1 Lushuo Road, Nanhui New City, Pudong New Area   (86) 21- 38298291

Lin-gang Pudong New Economy Park - Nicheng	Take charge of the land development, construction of infrastructure, investment attraction, industrial development, and supportive facilities in the Lin-gang Industrial Area	1786 Nanlu Road, Pudong New Area   (86) 21- 38298555
Lin-gang Pudong New Economy Park - Shuyuan	Take charge of the land development, construction of infrastructure, investment attraction, industrial development, and supportive facilities in the Lin-gang Industrial Area	Building 2, Lane 319, Wansong Road, Shuyuan Township, Pudong New Area   (86) 21- 38298368
Lin-gang Pudong New Economy Park - Wanxiang	Take charge of the land development, construction of infrastructure, investment attraction, industrial development, and supportive facilities in the Lin-gang Industrial Area	8 Wanhe Road, Wanxiang Township, Pudong New Area   (86) 21- 38298748
Lin-gang Modern Logistics Park	Take charge of the operation and management of Shanghai South Port and Lin-gang Logistics Park, and the development and construction of Yangshan Free Trade Zone. Promote the overall development and enhancement of regional economy by coordinating with other parks, supporting industrial upgrade and functional innovation, and facilitating investment and trade liberalization.	58 Cenglin Road, Lin-gang, Pudong New Area   (86) 21- 38298811
Harbour City Plaza	Take charge of the development, construction, tenant attraction, and operation of Harbour City Plaza, as well as the construction management as agent of the former Software Park plot	Room B410, 819 No.1 West Huanhu Road, Nanhui New City, Pudong New Area   (86) 21- 68289777
Lin-gang Marine Science Park	Take charge of the development, construction, tenant attraction, operation and management of Shanghai Lin-gang Marine Science Startup Park and Shanghai Lin-gang Marine Science Plaza	6th Floor, 399 No.1 Haiyang Road, Nanhui New City, Pudong New Area   (86) 021- 38072100
Lin-gang Software Park	Take charge of the development, construction, operation, and management of Shanghai Lin-gang Software Park	Room 201, Building No.3, Block 2, Harbour City Plaza, Lin-gang Software Park, 78 Yunjuan Road, Pudong New Area   400-9212-999
Jinqiao Lin-gang Comprehensive Area	Take charge of the development, construction, tenant attraction, operation, and management of the Lin-gang Comprehensive Area by Jinqiao Group	4th Floor, 199 Boyi Road, Nanhui New City, Pudong New Area   (86) 021- 58292828
Zhangjiang Science and Technology Port	Take charge of the development, construction, operation, and management of the Zhangjiang Science and Technology Port in Lin-gang Area	5888 Sansan Road, Pudong New Area   (86) 21- 68282372
Lin-gang Park of Minghang Development Zone	Take charge of the development, construction, operation, and management of Lingang Park of Minghang Development Zone, a national level industrial park in Shanghai	501 Xuri Road, Lin-gang New City,   (86) 21- 58078888
Shanghai Lin-gang Innovation Center	Take charge of the development, construction, and operation of the incubator in Lin-gang Innovation Center, which has a total surface area of 100,000 m <sup>2</sup>	18th Floor, Building A, 333 No.1 Haiyang Road, Lin-gang New City, Pudong New Area   (86)21-68286776
Nanhui New City Business Service Center	Take charge of the investment attraction, fiscal support, investment retainment, and other services for companies registered in Nanhui New City of Lin-gang Special Area. Facilitate the work of various government departments in Nanhui New City	9th Floor, Comprehensive Building, 200 Shengang Avenue, Pudong New Area   (86) 21- 68282205
Nicheng Township Business Service Center	Take charge of the investment attraction, tax contribution, fiscal support, investment retainment, and project attraction in Nicheng Township of Lin-gang Special Area	1786 Nanlu Road, Pudong New Area   (86) 21- 58071035
Shuyuan Township Business Service Center	Take charge of the investment attraction, business registration, licensing, investment retainment, and prevention of financial risks in Shuyuan Township of Lin-gang Special Area	319 Wansong Road, Shuyuan Township, Pudong New Area   (86) 21- 58190629
Wanxiang Township Business Service Center	Take charge of the investment attraction, business registration, licensing, investment retainment, and prevention of financial risks in Wanxiang Township of Lin-gang Special Area	Building 21, Lane 83, North Hongxiang Road, Wanxiang Township, Pudong New Area   (86) 21- 58046677